

# RNAV (GPS) RWY 1

VALLE (40G)

APP CRS <b>008°</b>	Rwy Ldg TDZE Apt Elev	<b>4199</b> <b>5999</b> <b>5999</b>
------------------------	-----------------------------	---

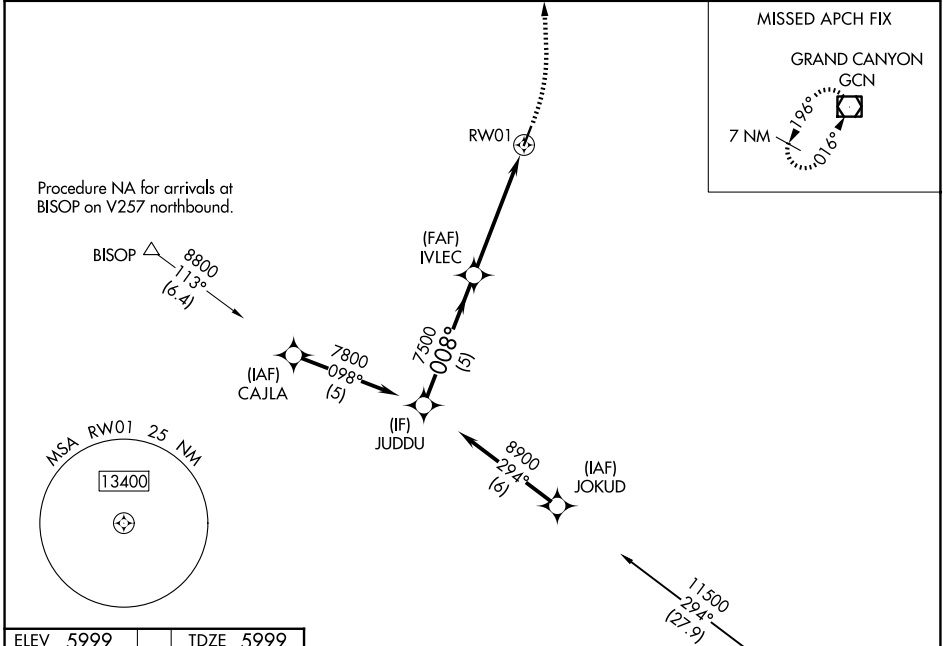
RNP APCH.  
 Procedure NA at night. Rwy 1 helicopter visibility reduction below 1 SM NA. Use Grand Canyon Ntl Park altimeter setting; when not received, procedure NA.

MISSED APPROACH: Climbing left turn to 10000 direct GCN VOR/DME and hold.

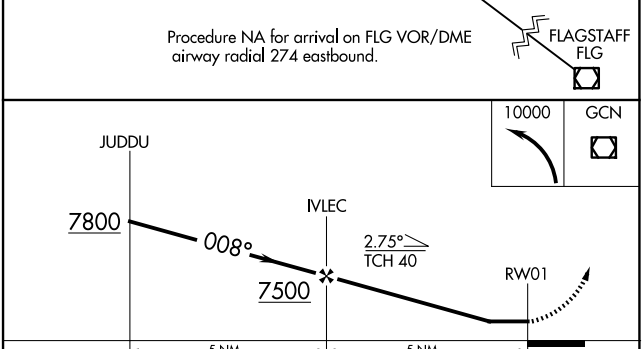
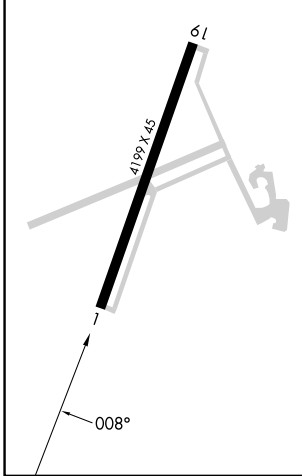
GCN ASOS  
**124.3**

LOS ANGELES CENTER  
**124.85 319.2**

UNICOM  
**122.8 (CTAF)**



ELEV 5999	TDZE 5999
-----------	-----------



CATEGORY	A	B	C	D
LNAV MDA	6620-1	621 (700-1)	6620-1 <sup>3</sup> / <sub>4</sub> 621 (700-1 <sup>3</sup> / <sub>4</sub> )	NA
CIRCLING	6620-1 621 (700-1)	6640-1 641 (700-1)	6640-1 <sup>3</sup> / <sub>4</sub> 641 (700-1 <sup>3</sup> / <sub>4</sub> )	NA

SW-4, 14 MAY 2026 to 11 JUN 2026

SW-4, 14 MAY 2026 to 11 JUN 2026