

LOC/DME I-VDF 111.35 Chan 50 (Y)	APP CRS 226°	Rwy Ldg TDZE Apt Elev	4200 21 21
---	------------------------	-----------------------------	---------------------------------------

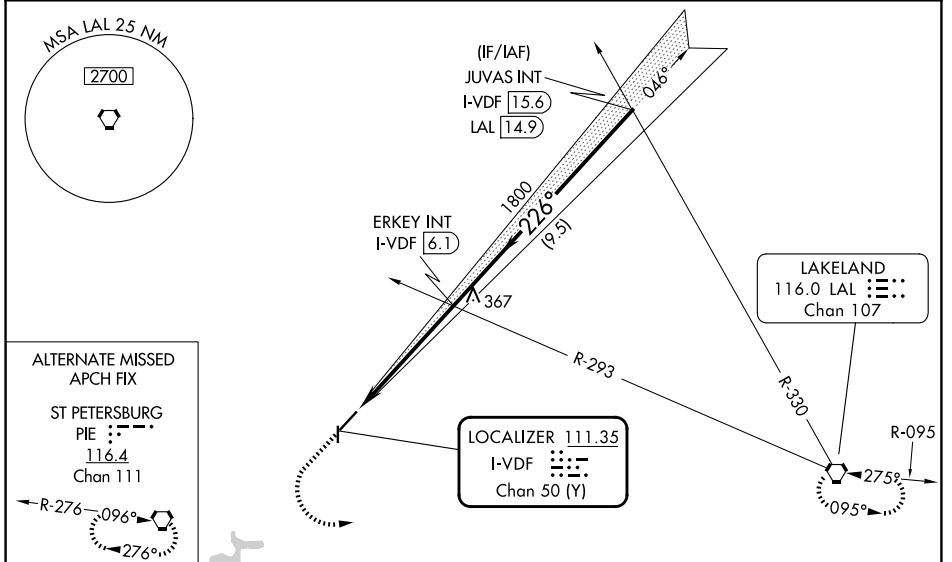
ILS or LOC RWY 23

TAMPA EXEC (VDF)

⚠ When local altimeter setting not received, use Tampa Intl altimeter setting and increase S-ILS 23 DA to 323; increase all MDA 40 feet and S-LOC and Circling Cat C visibilities ¼ SM. For inop MALSRR when using Tampa Intl altimeter setting, increase S-LOC 23 Cat C visibility to 1½. Inop table does not apply to S-ILS 23 and S-LOC 23 Cats A/B. Rwy 23 helicopter visibility reduction below ¾ SM NA. Circling Rwy 18, 36 NA at night.

MALSRR MISSED APPROACH: Climb to 800 then climbing left turn to 2000 direct LAL VORTAC and hold.

AWOS-3 121.125	TAMPA APP CON 119.9 290.3	UNICOM 122.7 (CTAF) 0
--------------------------	-------------------------------------	---------------------------------



ELEV 21	D	TDZE 21
---------	----------	---------

800 2000 LAL

ERKEY INT I-VDF 6.1

JUVAS INT I-VDF 15.6

I-VDF 0.8

1800 1800

5.3 NM 9.5 NM

GS 3.10°
TCH 40

CATEGORY	A	B	C	D
S-ILS 23	298-1	277 (300-1)		NA
S-LOC 23	560-1	539 (600-1)		NA
CIRCLING	560-1 539 (600-1)	760-1 739 (800-1)	800-2¼ 779 (800-2¼)	NA

REIL Rws 5, 18, and 36
MIRL Rws 5-23 and 18-36

FAF to MAP 5.3 NM

Knots	60	90	120	150	180
Min:Sec	5:18	3:32	2:39	2:07	1:46

SE-3, 14 MAY 2026 to 11 JUN 2026

SE-3, 14 MAY 2026 to 11 JUN 2026