

| | | |
|---------------------------------|------------------------|---|
| WAAS CH 78100 W23A | APP CRS 226° | Rwy Ldg 4200 TDZE 21 Apt Elev 21 |
|---------------------------------|------------------------|---|


RNAV (GPS) RWY 23

TAMPA EXEC (VDF)

RNP APCH-GPS.

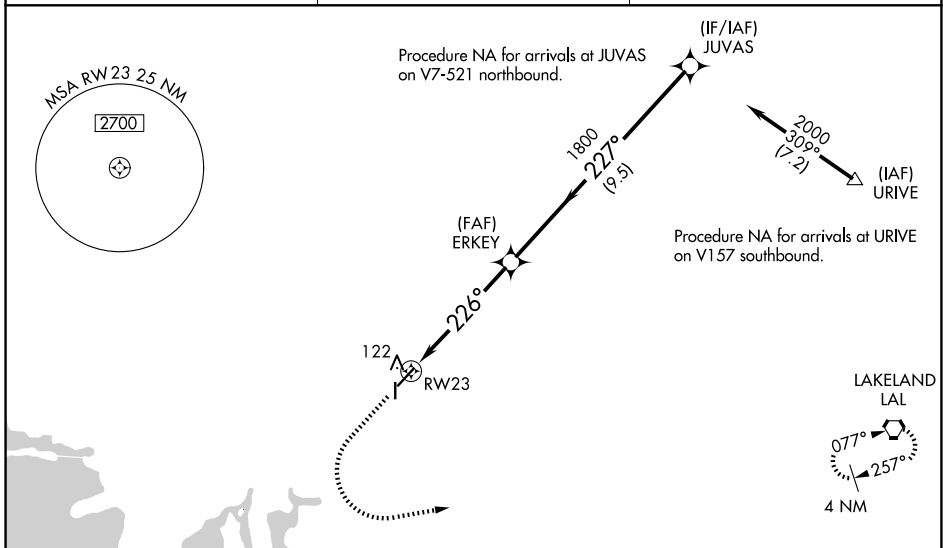
▼ Inop table does not apply to LPV and LNAV Cat A/B. Baro-VNAV NA when using Tampa Intl altimeter setting. For uncompensated Baro-VNAV systems, LNAV/VNAV NA below -15°C (5°F) or above 54°C (130°F). Rwy 23 helicopter visibility reduction below 3/4 SM NA. When local altimeter setting not received, use Tampa Intl altimeter setting and increase LPV DA to 323 feet, LNAV/VNAV DA to 513; increase all MDAs 40 feet, and LNAV and Circling Cat C visibilities 1/4 SM. Circling Rwy 18, 36 NA at night.

MALSRL



MISSED APPROACH:
Climb to 800 then climbing left turn to 2700 direct to LAL VORTAC and hold.

| | | |
|--------------------------|-------------------------------------|-------------------------------|
| AWOS-3 121.125 | TAMPA APP CON 119.9 290.3 | UNICOM 122.7 (CTAF) |
|--------------------------|-------------------------------------|-------------------------------|



SE-3, 14 MAY 2026 to 11 JUN 2026

SE-3, 14 MAY 2026 to 11 JUN 2026

ELEV 21 TDZE 21

REIL Rws 5, 18, and 36
MIRL Rws 5-23 and 18-36

| CATEGORY | A | B | C | D |
|--------------|----------------------|----------------------|------------------------------|----|
| LPV DA | 298-1 | 277 (300-1) | | NA |
| LNAV/VNAV DA | 488-1 1/8 | 467 (500-1 1/8) | | NA |
| LNAV MDA | 560-1 | 539 (600-1) | | NA |
| CIRCLING | 560-1 539 (600-1) | 760-1 739 (800-1) | 800-2 1/4 779 (800-2 1/4) | NA |