

WAAS CH <b>97426</b> <b>W05A</b>	APP CRS <b>046°</b>	Rwy Ldg TDZE Apt Elev	<b>4956</b> <b>21</b> <b>21</b>
----------------------------------------	------------------------	-----------------------------	---------------------------------------

# RNAV (GPS) RWY 5

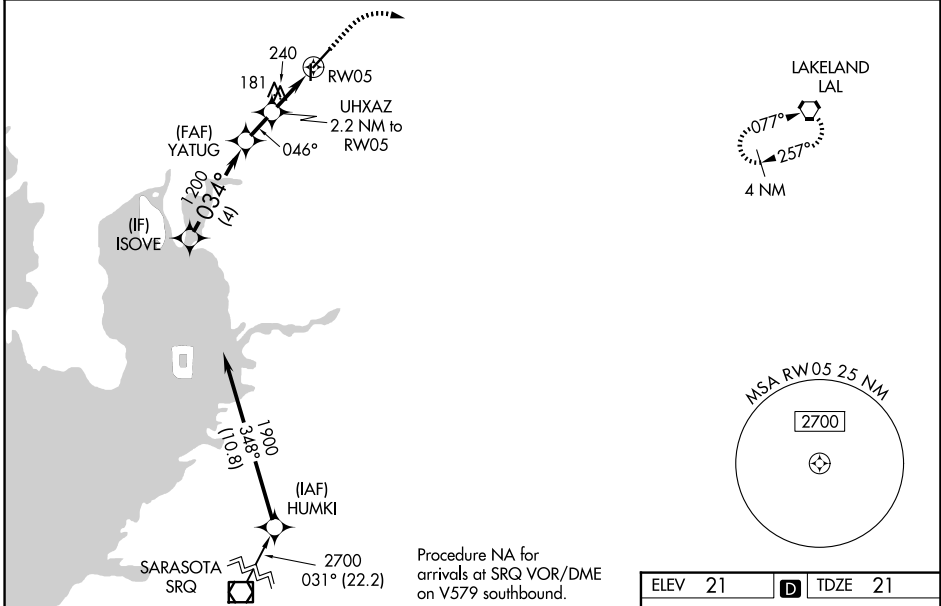
TAMPA EXEC (VDF)

RNP APCH-GPS.

▼ Rwy 5 helicopter visibility reduction below  $\frac{3}{4}$  SM NA. For uncompensated Baro-VNAV systems, LNAV/VNAV NA below 1°C (34°F) or above 54°C (130°F). When local altimeter setting not received, use Tampa Intl altimeter setting and increase LPV DA to 316 feet, LNAV/VNAV DA to 507 feet; increase all MDAs 40 feet and increase LNAV and Circling Cat C visibilities  $\frac{1}{4}$  SM. Baro-VNAV and VDP NA when using Tampa Intl altimeter setting. Circling Rwy 18, 36 NA at night.

MISSED APPROACH:  
Climb to 600 then climbing right turn to 2000 direct LAL VORTAC and hold.

AWOS-3 <b>121.125</b>	TAMPA APP CON <b>119.9 290.3</b>	UNICOM <b>122.7 (CTAF)</b>
--------------------------	-------------------------------------	-------------------------------

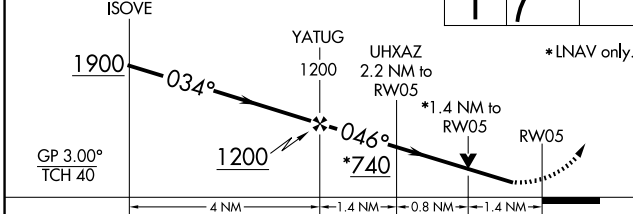


SE-3, 14 MAY 2026 to 11 JUN 2026

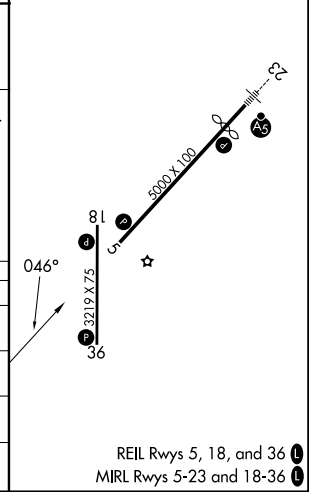
SE-3, 14 MAY 2026 to 11 JUN 2026

Procedure NA for arrivals at SRQ VOR/DME on V579 southbound.

ELEV 21	TDZE 21
---------	---------



CATEGORY	A	B	C	D
LPV DA	271- $\frac{7}{8}$	250 (300- $\frac{7}{8}$ )		NA
LNAV/VNAV DA	507-1 $\frac{5}{8}$	486 (500-1 $\frac{5}{8}$ )		NA
LNAV MDA	500-1	479 (500-1)	500-1 $\frac{3}{8}$ 479 (500-1 $\frac{3}{8}$ )	NA
CIRCLING	540-1 519 (600-1)	760-1 739 (800-1)	800-2 $\frac{1}{4}$ 779 (800-2 $\frac{1}{4}$ )	NA



REIL Rwy 5, 18, and 36  
MRL Rwy 5-23 and 18-36