

VOR/DME GEE 108.2 Chan 19	APP CRS 085°	Rwy Ldg TDZE Apt Elev 814	N/A N/A 814
---	------------------------	--	--

VOR-A

CANANDAIGUA (IUA)

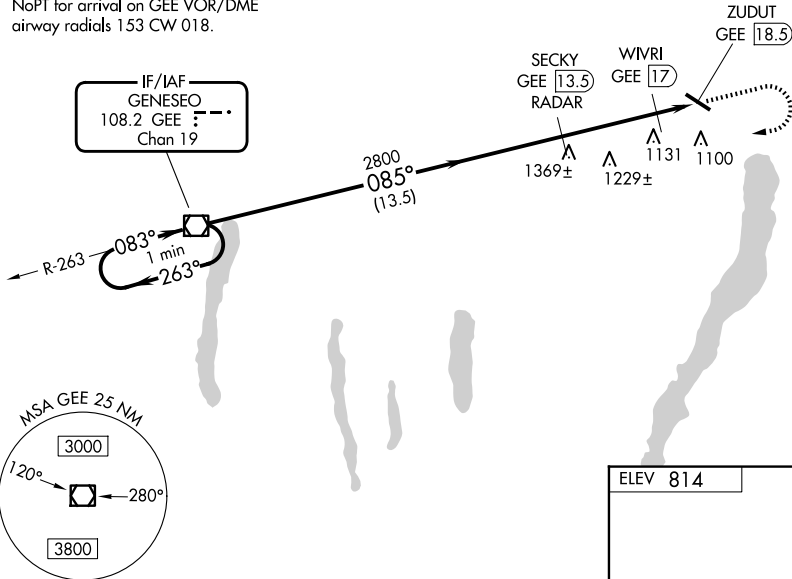
DME or RADAR required.

⚠️ When local altimeter setting not received, use Rochester altimeter setting and increase all MDAs 100 feet and Circling visibility all Cats ¼ SM, increase WIVRI Fix Circling minimums visibility Cat C ½ SM.

MISSED APPROACH: Climb to 2000 then climbing right turn to 3500 direct GEE VOR/DME and hold.

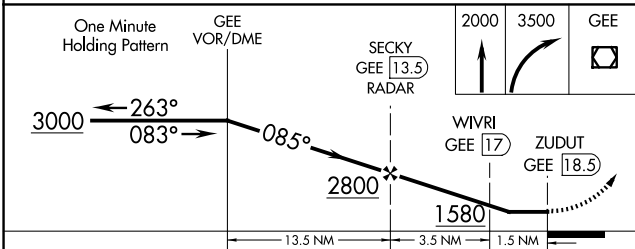
AWOS-3P 118.675	ROCHESTER APP CON 119.55 269.6	UNICOM 122.8 (CTAF) 0
---------------------------	--	---------------------------------

NoPT for arrival on GEE VOR/DME
airway radials 153 CW 018.



NE-2, 14 MAY 2026 to 11 JUN 2026

NE-2, 14 MAY 2026 to 11 JUN 2026



ELEV 814

MIRL Rwy 13-31
REIL Rws 13 and 31

FAF to MAP 5 NM

Knots	60	90	120	150	180
Min:Sec	5:00	3:20	2:30	2:00	1:40

CATEGORY	A	B	C	D
CIRCLING	1580-1	766 (800-1)	1580-2 ¼ 766 (800-2 ¼)	NA
WIVRI FIX MINIMUMS				
CIRCLING	1500-1	686 (700-1)	1540-2 726 (800-2)	NA