

| | | | |
|--|------------------------|-----------------------------|---|
| WAAS CH 78433 W17A | APP CRS 179° | Rwy Ldg TDZE Apt Elev | 5010 1010 1010 |
|--|------------------------|-----------------------------|---|

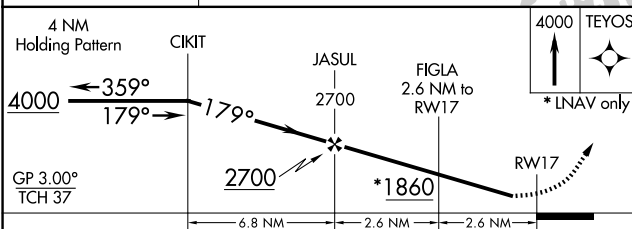
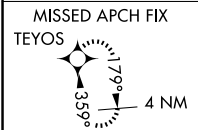
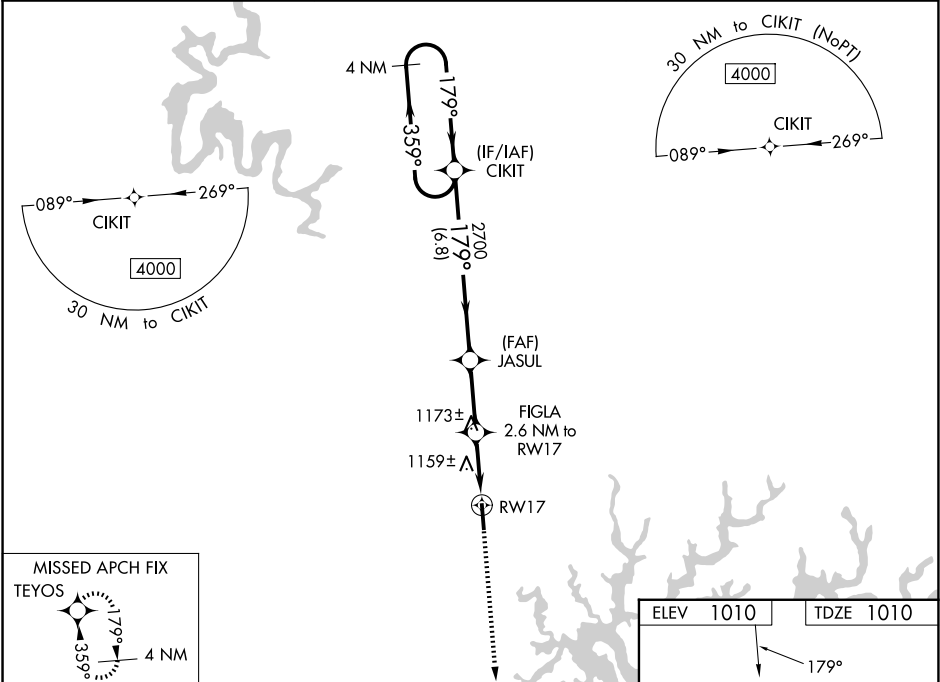
RNAV (GPS) RWY 17

RUSSELL COUNTY (K24)

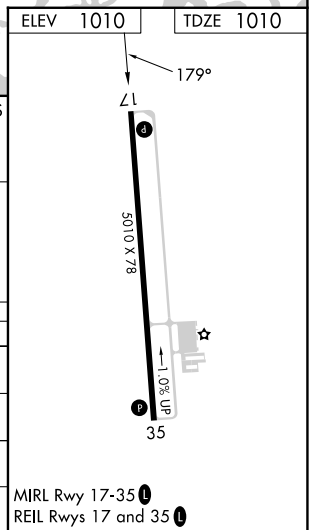
▼ Baro-VNAV NA when using Wayne County altimeter setting. For uncompensated Baro-VNAV systems, LNAV/VNAV NA below -17°C (2°F) or above 54°C (130°F). When local altimeter setting not received, use Wayne County altimeter setting increase all DA 42 feet and increase all MDA 60 feet; increase LPV all Cats ½ mile; LNAV/VNAV all Cats ¼ mile and LNAV and Circling Cats C/D visibility ¼ mile. DME/DME RNP-0.3 NA. Helicopter visibility reduction below ¾ SM NA.

MISSED APPROACH:
Climb to 4000 direct TEYOS and hold.

| | | |
|-------------------------|---|---------------------------------|
| AWOS-3P 119.6 | INDIANAPOLIS CENTER 124.625 371.925 | UNICOM 123.0 (CTAF) 0 |
|-------------------------|---|---------------------------------|



| CATEGORY | A | B | C | D |
|--------------|-----------------------|-----------------------|-----------------------|-------------------------|
| LPV DA | | 1346-1½ | 336 (400-1½) | |
| LNAV/VNAV DA | | 1424-1¾ | 414 (500-1¾) | |
| LNAV MDA | 1420-1 | 410 (500-1) | 1420-1½ | 410 (500-1½) |
| CIRCLING | 1540-1 530 (600-1) | 1620-1 610 (700-1) | 1700-2 690 (700-2) | 1700-2¼ 690 (700-2¼) |



SE-1, 14 MAY 2026 to 11 JUN 2026

SE-1, 14 MAY 2026 to 11 JUN 2026