

LOC I-CPF 109.35	APP CRS 145°	Rwy Ldg 5499
		TDZE 1243
		Apt Elev 1256

LOC RWY 14

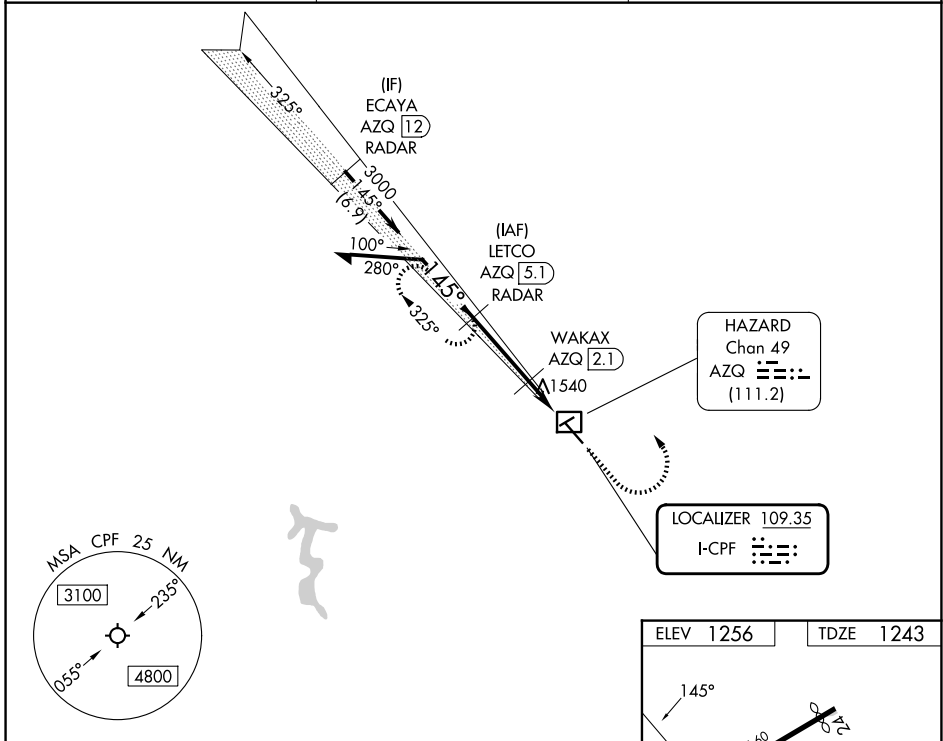
WENDELL H FORD (CPF)

DME required. RADAR required for procedure entry.
 RADAR required for missed approach.

⚠ Circling Rwy 24, 32 NA at night. Simultaneous reception of I-CPF and AZQ DME required. Rwy 14 helicopter visibility reduction below 3/4 SM NA.
 DME from AZQ DME.

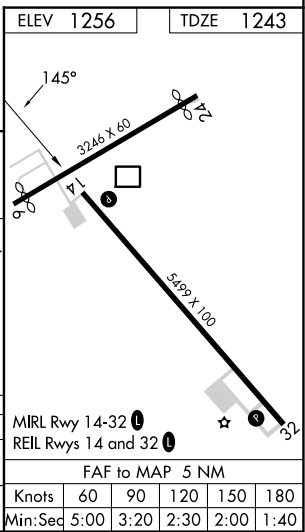
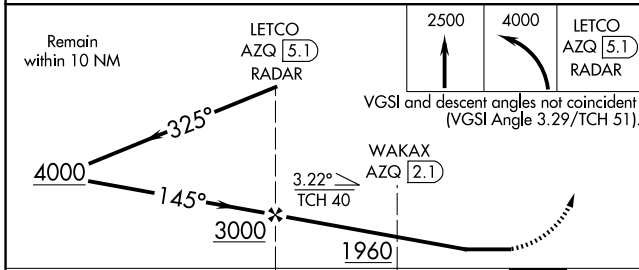
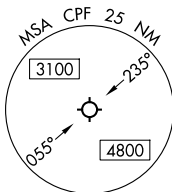
MISSED APPROACH: Climb to 2500 then climbing left turn to 4000 to LETCO/AZQ 5.1 DME/RADAR and hold, continue climb-in-hold to 4000.

AWOS-3 119.025	INDIANAPOLIS CENTER 126.575 257.85	UNICOM 122.7 (CTAF) 0
--------------------------	--	---------------------------------



SE-1, 14 MAY 2026 to 11 JUN 2026

SE-1, 14 MAY 2026 to 11 JUN 2026



CATEGORY	A	B	C	D
S-LOC 14	1800-1	557 (600-1)	1800-1 1/2	557 (600-1 1/2)
CIRCLING	2000-1 744 (800-1)	2040-1 784 (800-1)	2060-2 1/4 804 (900-2 1/4)	2140-3 884 (900-3)