

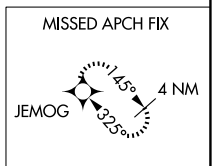
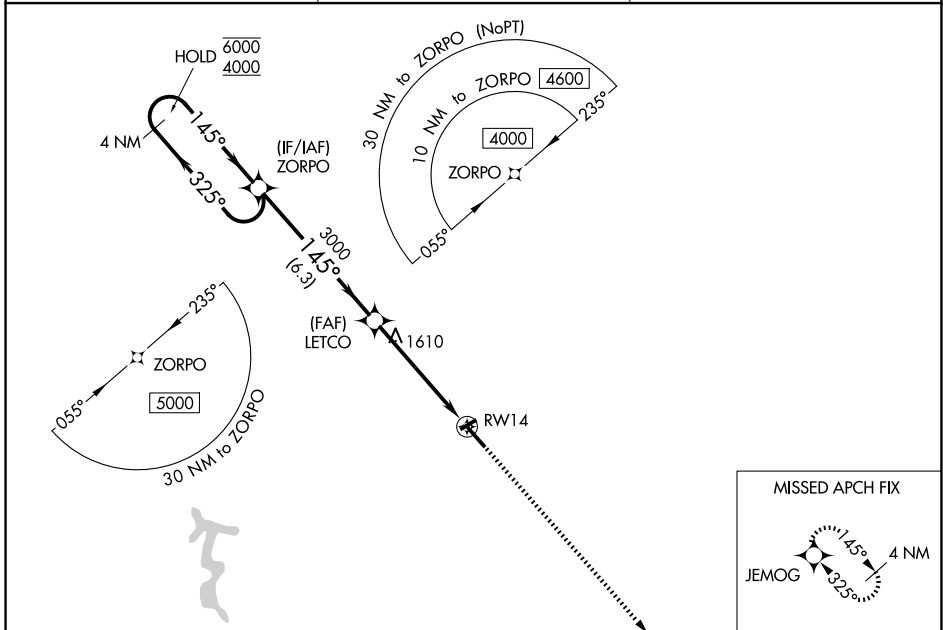
WAAS CH 69323 W14A	APP CRS 145°	Rwy Ldg TDZE Apt Elev	5499 1243 1256
--	------------------------	-----------------------------	---

RNAV (GPS) RWY 14

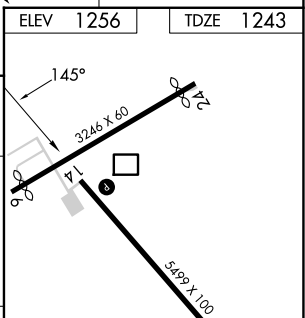
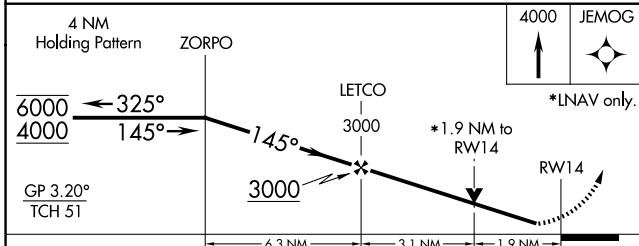
WENDELL H FORD (CPF)

RNP APCH - GPS.		MISSED APPROACH: Climb to 4000 direct JEMOG and hold.
Circling Rwy 24, 32 NA at night. For uncompensated Baro-VNAV systems, LNAV/VNAV NA below -17°C or above 54°C. Rwy 14 helicopter visibility reduction below 3/4 SM NA.		

AWOS-3 119.025	INDIANAPOLIS CENTER 126.575 257.85	UNICOM 122.7 (CTAF)
--------------------------	--	-------------------------------



ELEV	1256	TDZE	1243
------	------	------	------



CATEGORY	A	B	C	D
LPV DA	1443-3/4	200 (200-3/4)	1493-3/4 250 (300-3/4)	NA
LNAV/VNAV DA	1858-2 615 (700-2)			NA
LNAV MDA	1880-1	637 (700-1)	1880-1 3/4	637 (700-1 3/4)
CIRCLING	2000-1 744 (800-1)	2060-1 1/4 804 (900-1 1/4)	2060-2 1/4 804 (900-2 1/4)	2140-3 884 (900-3)

MIRL Rwy 14-32
REIL Rws 14 and 32

SE-1, 14 MAY 2026 to 11 JUN 2026

SE-1, 14 MAY 2026 to 11 JUN 2026