

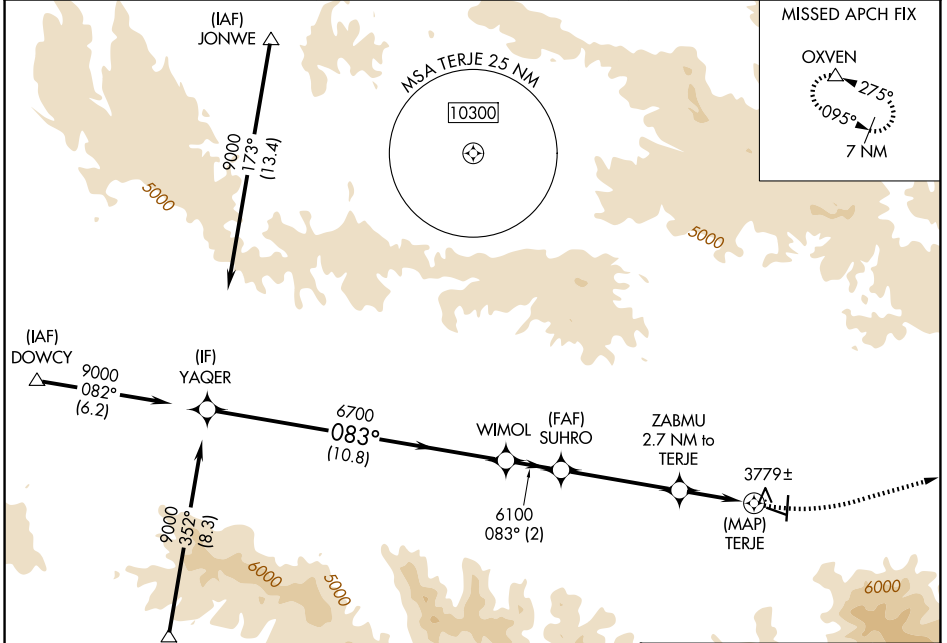
RNAV (GPS) Y RWY 9 GRANT COUNTY RGNL/OGILVIE FLD (GCD)

APP CRS 083°	Rwy Ldg TDZE Apt Elev	4100 3669 3703
------------------------	-----------------------------	---

▼ When local altimeter setting not received, procedure NA.
▲ Circling NA south of Rwy 9-27. DME/DME RNP-0.3 NA.
 Helicopter visibility reduction below ¾ SM not authorized.

MISSED APPROACH: Climbing left turn to 12000 direct OXVEN and hold, continue climb-in-hold to 12000.

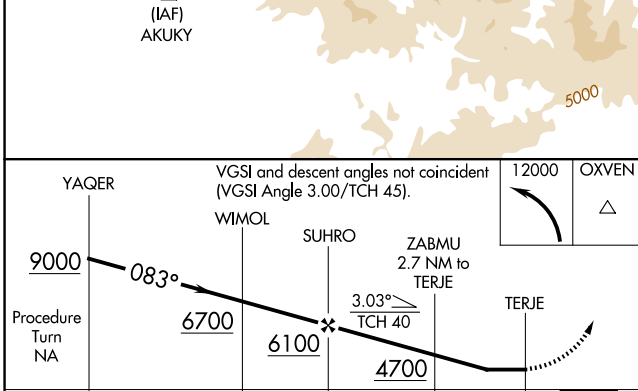
AWOS-3 118.375	SEATTLE CENTER 128.15 257.75	UNICOM 122.8 (CTAF) 0
--------------------------	--	---------------------------------



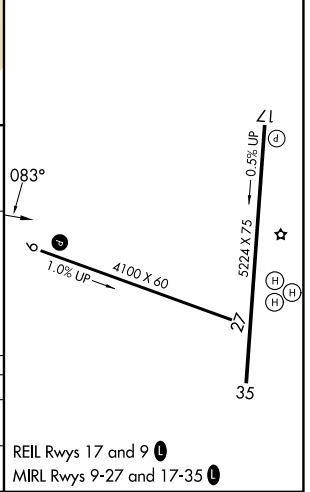
NW-1, 14 MAY 2026 to 11 JUN 2026

NW-1, 14 MAY 2026 to 11 JUN 2026

ELEV 3703	TDZE 3669
-----------	-----------



CATEGORY	A	B	C	D
LNVA MDA	4280-1 611 (600-1)	4280-1¾ 611 (600-1¾)	4280-1¾ 611 (600-1¾)	NA
CIRCLING	4280-1 577 (600-1)	4520-1¼ 817 (900-1¼)	5160-3 1457 (1500-3)	NA



REIL Rwy 17 and 9
MIRL Rwy 9-27 and 17-35