

WAAS CH <b>73010</b> <b>W09A</b>	APP CRS <b>091°</b>	Rwy Ldg <b>4100</b> TDZE <b>3669</b> Apt Elev <b>3703</b>
--	------------------------	---

# RNAV (GPS) Z RWY 9

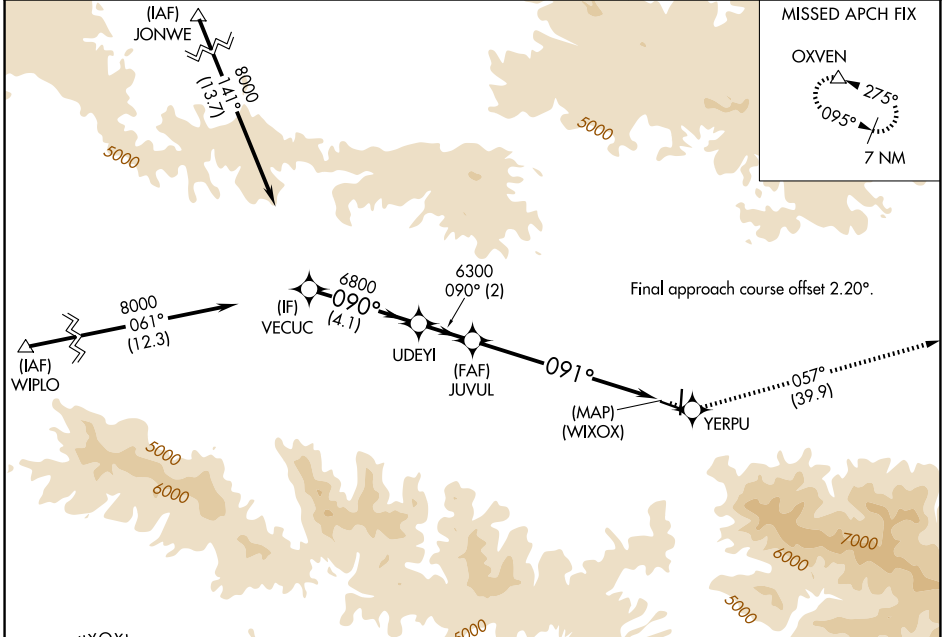
GRANT COUNTY RGNL/OGLIVIE FLD (GCD)

RNP APCH - GPS.

▼ When local altimeter setting not received, procedure NA.  
Rwy 9 helicopter visibility reduction below 3/4 SM NA.

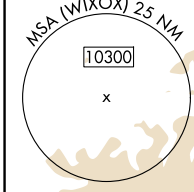
MISSED APPROACH: Climb to 12000 direct YERPU and on track 057° to OXVEN and hold, continue climb-in-hold to 12000.

AWOS-3 <b>118.375</b>	SEATTLE CENTER <b>128.15 257.75</b>	UNICOM <b>122.8 (CTAF) 0</b>
--------------------------	--	---------------------------------

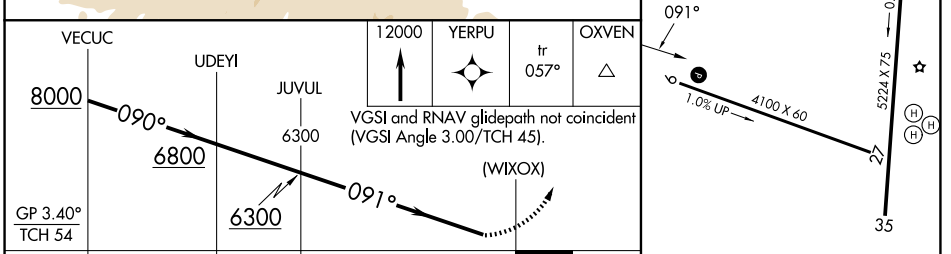


NW-1, 14 MAY 2026 to 11 JUN 2026

NW-1, 14 MAY 2026 to 11 JUN 2026



ELEV 3703	TDZE 3669
-----------	-----------



CATEGORY	A	B	C	D
LPV DA	4269-2	600 (600-2)		NA



REIL Rwys 17 and 9 0  
MRL Rwys 9-27 and 17-35 0