

WAAS CH <b>90526</b> <b>W21A</b>	APP CRS <b>207°</b>	Rwy Ldg <b>5003</b> TDZE <b>537</b> Apt Elev <b>537</b>
--	------------------------	---

# RNAV (GPS) RWY 21

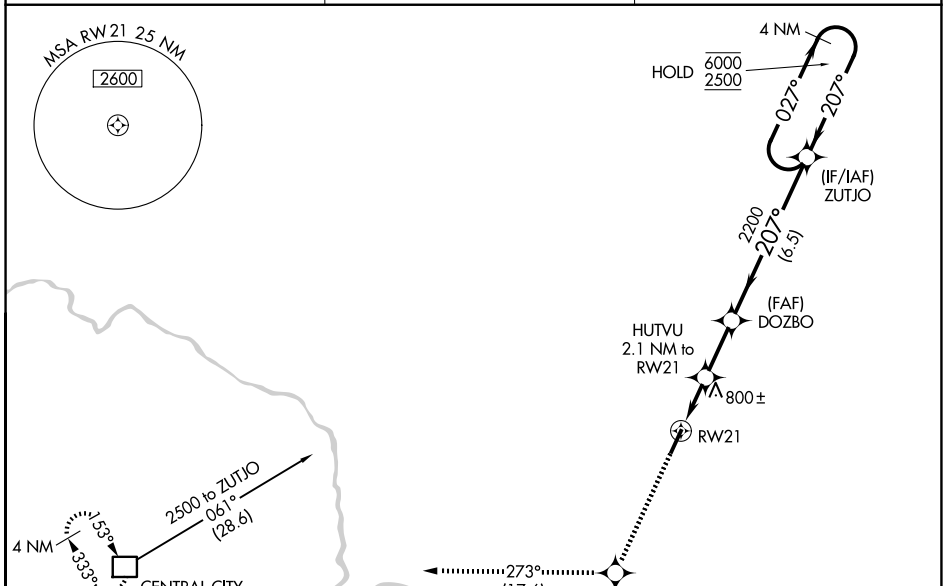
OHIO COUNTY (JQD)

RNP APCH - GPS.

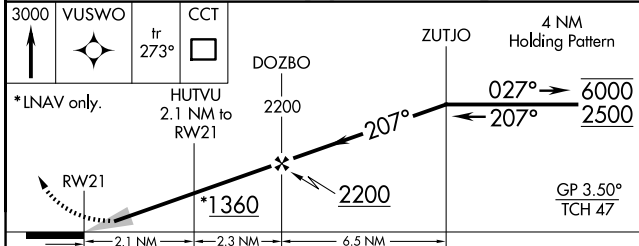
**⚠** Baro-VNAV NA when using Owensboro altimeter setting. For uncompensated Baro-VNAV systems, LNAV/VNAV NA below -16°C or above 54°C. When local altimeter setting not received, use Owensboro altimeter setting and increase LPV DA to 858 feet, increase LNAV/VNAV DA to 1082 feet. Increase all MDA 80 feet, increase LNAV/VNAV visibilities all Cats ¼ SM, increase LNAV and Circling Cat C visibility ¼ SM. Rwy 21 helicopter visibility reduction below 1 SM NA. Procedure NA at night.

**MISSED APPROACH:**  
Climb to 3000 direct VUSWO and on track 273° to CCT DME and hold.

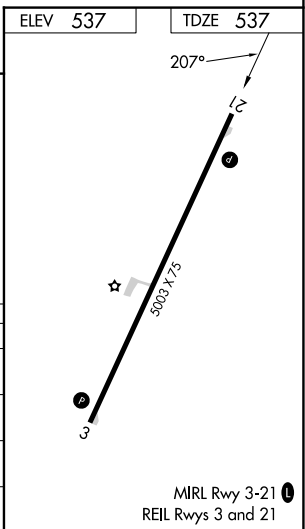
AWOS-3PT <b>132.1</b>	EVANSVILLE APP CON ★ <b>124.025 290.9</b>	UNICOM <b>122.8 (CTAF) ①</b>
--------------------------	--	---------------------------------



ELEV 537	TDZE 537
----------	----------



CATEGORY	A	B	C	D
LPV DA	787-1	250 (300-1)	807-1 270 (300-1)	NA
LNAV/VNAV DA	1011-1 3/8		474 (500-1 3/8)	NA
LNAV MDA	1060-1	523 (600-1)	1060-1 1/2 523 (600-1 1/2)	NA
CIRCLING	1060-1 523 (600-1)	1100-1 563 (600-1)	1300-2 1/4 763 (800-2 1/4)	NA



SE-1, 14 MAY 2026 to 11 JUN 2026

SE-1, 14 MAY 2026 to 11 JUN 2026