

WAAS CH 45926 W03A	APP CRS 027°	Rwy Ldg TDZE 530 Apt Elev 537
--	------------------------	---

RNAV (GPS) RWY 3

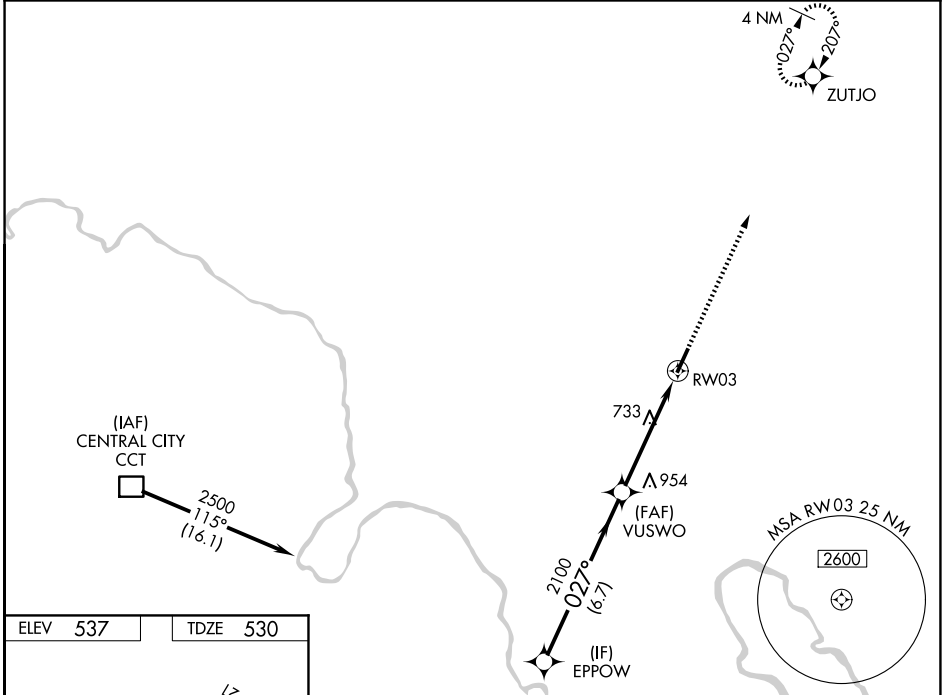
OHIO COUNTY (JQD)

RNP APCH - GPS.

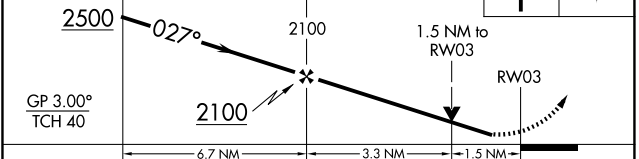
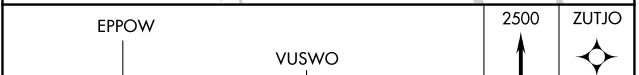
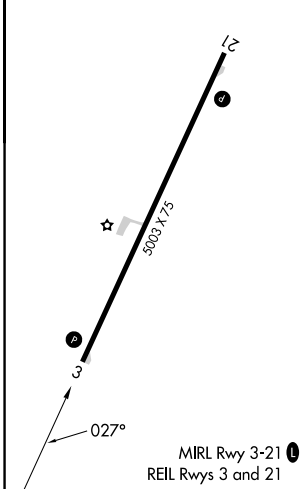
⚠ Baro-VNAV and VDP NA when using Owensboro altimeter setting. For uncompensated Baro-VNAV systems, LNAV/VNAV NA below -16°C or above 54°C. When local altimeter setting not received, use Owensboro altimeter setting and increase LPV and LNAV/VNAV DA to 851 feet. Increase all MDA 80 feet and LNAV Cat C visibility $\frac{3}{8}$ SM and Circling Cat C visibility $\frac{1}{4}$ SM. Circling Rwy 21 NA at night. Rwy 3 helicopter visibility reduction below $\frac{3}{4}$ SM NA.

MISSED APPROACH:
Climb to 2500 direct ZUTJO and hold.

AWOS-3PT 132.1	EVANSVILLE APP CON ★ 124.025 290.9	UNICOM 122.8 (CTAF) 📻
--------------------------	--	--



ELEV 537	TDZE 530
-----------------	-----------------



CATEGORY	A	B	C	D
LPV DA		780-1 250 (300-1)		NA
LNAV/VNAV DA		780-1 250 (300-1)		NA
LNAV MDA	1040-1	510 (600-1)	1040-1 $\frac{3}{8}$ 510 (600-1 $\frac{3}{8}$)	NA
CIRCLING	1040-1 503 (600-1)	1100-1 563 (600-1)	1300-2 $\frac{1}{4}$ 763 (800-2 $\frac{1}{4}$)	NA