

WAAS CH 78133 W31A	APP CRS 308°	Rwy Ldg TDZE 1374 Apt Elev 1376
--	------------------------	---

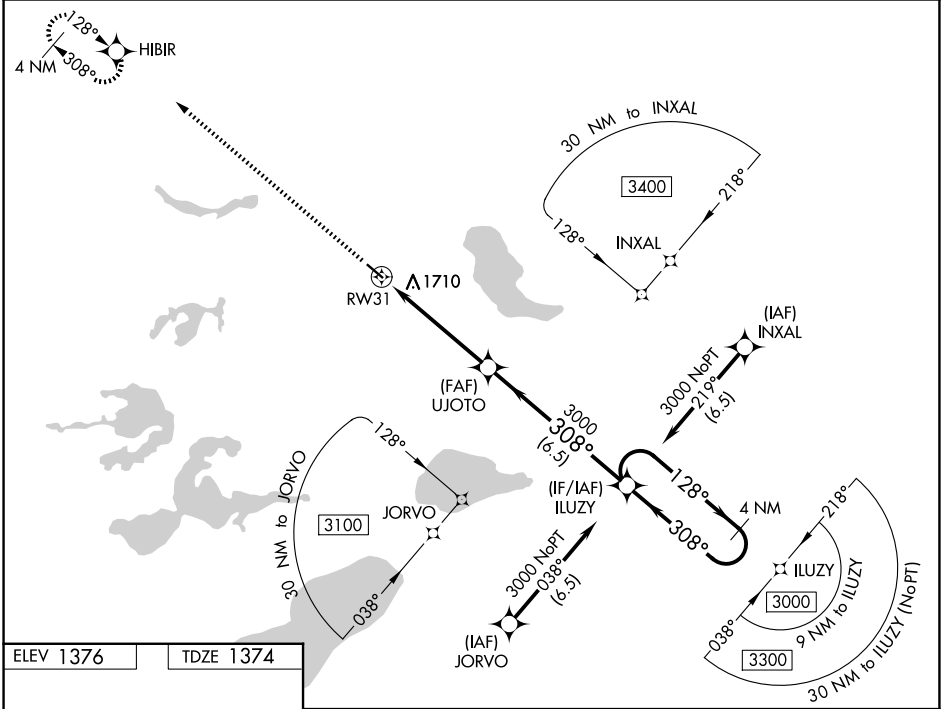
RNAV (GPS) RWY 31

PERHAM MUNI (16D)

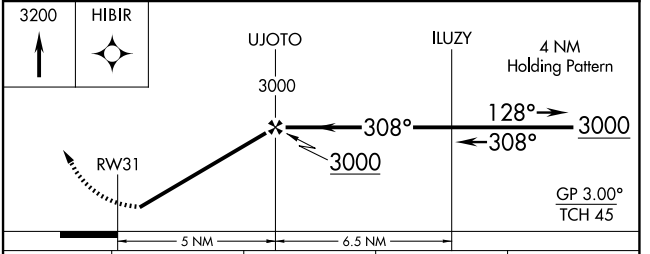
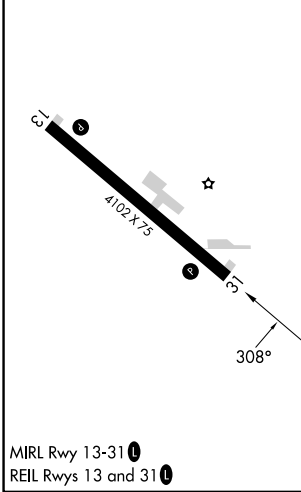
Baro-VNAV NA. DME/DME RNP-0.3 NA. Helicopter visibility reduction below 3/4 SM NA. Use Detroit Lakes altimeter setting; when not received, use Wadena altimeter setting.

MISSED APPROACH: Climb to 3200 direct HIBIR and hold.

MINNEAPOLIS CENTER 126.1 269.2	GCO 121.725	CTAF 122.9
--	-----------------------	----------------------



ELEV 1376	TDZE 1374
-----------	-----------



CATEGORY	A	B	C	D
LPV DA	1669-1	295 (300-1)		NA
LNAV/VNAV DA	2158-2½	784 (800-2½)		NA
LNAV MDA	2080-1	706 (800-1)		NA
CIRCLING	2120-1	744 (800-1)		NA

NC-1, 14 MAY 2026 to 11 JUN 2026

NC-1, 14 MAY 2026 to 11 JUN 2026