

WAAS CH <b>61108</b> W21A	APP CRS <b>212°</b>	Rwy Ldg TDZE Apt Elev	<b>4000</b> <b>217</b> <b>220</b>
---------------------------------	------------------------	-----------------------------	---

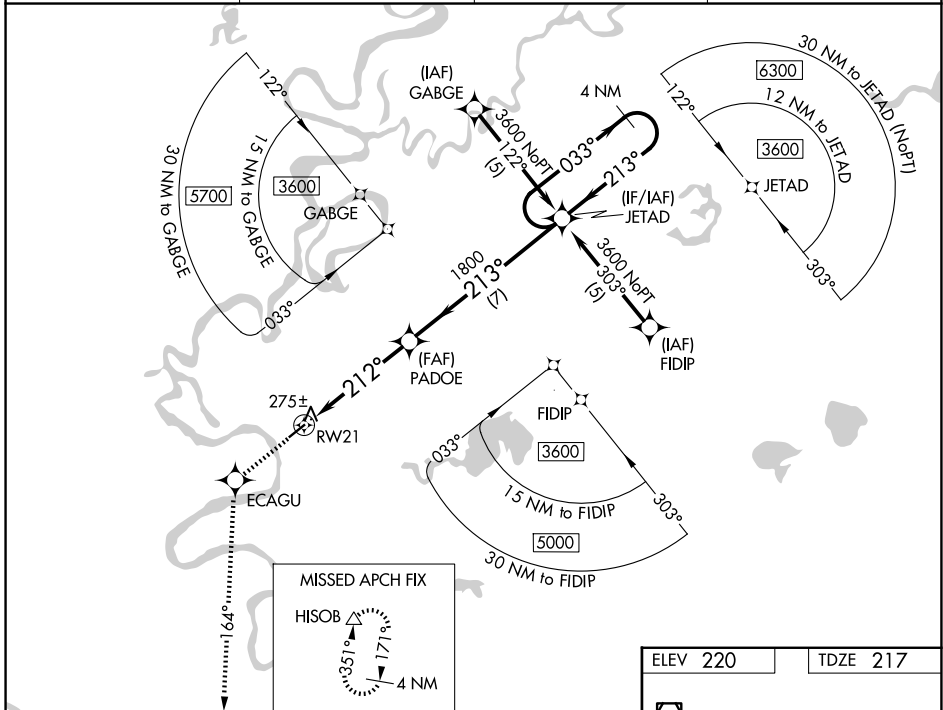
# RNAV (GPS) RWY 21

HUSLIA (HLA)(PAHL)

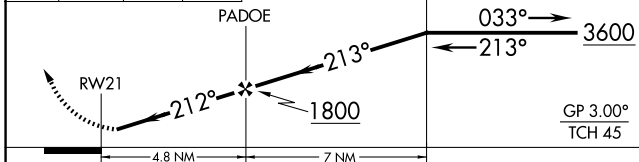
For uncompensated Baro-VNAV systems, LNAV/VNAV NA below -25°C (-13°F) or above 48°C (118°F). Helicopter visibility reduction below ¾ SM NA. DME/DME RNP-0.3 NA.

MISSED APPROACH: Climb to 3000 direct ECAGU and via 164° track to HISOB and hold.

AWOS-3P <b>135.75</b>	ANCHORAGE CENTER <b>127.0 290.2</b>	FAIRBANKS RADIO <b>122.4</b>	CTAF <b>122.8</b>
--------------------------	--	---------------------------------	----------------------

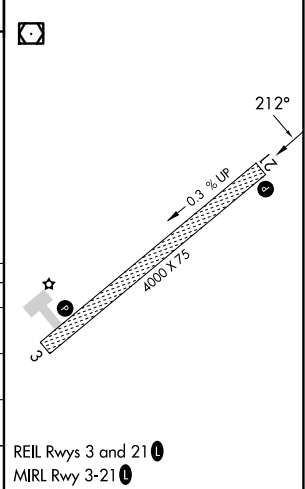


3000	ECAGU	HISOB	VGSI and RNAV glidepath not coincident (VGSI Angle 3.00/TCH 25).
↑	✧	△	
	tr 164°		



CATEGORY	A	B	C	D
LPV DA		517-1	300 (300-1)	
LNAV/VNAV DA		549-1¼	332 (400-1¼)	
LNAV MDA		540-1	323 (400-1)	
CIRCLING	600-1 380 (400-1)	680-1 460 (500-1)	680-1½ 460 (500-1½)	780-2 560 (600-2)

ELEV 220	TDZE 217
----------	----------



AK, 14 MAY 2026 to 09 JUL 2026

AK, 14 MAY 2026 to 09 JUL 2026