

WAAS CH <b>42608</b> <b>W03A</b>	APP CRS <b>032°</b>	Rwy Ldg TDZE Apt Elev	<b>4000</b> <b>220</b> <b>220</b>
----------------------------------------	------------------------	-----------------------------	-----------------------------------------

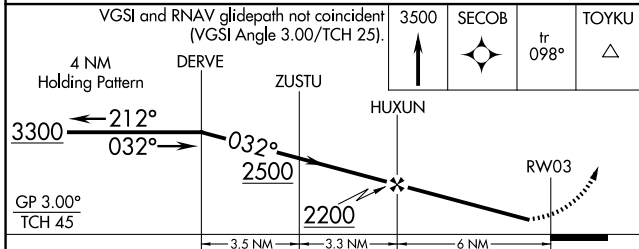
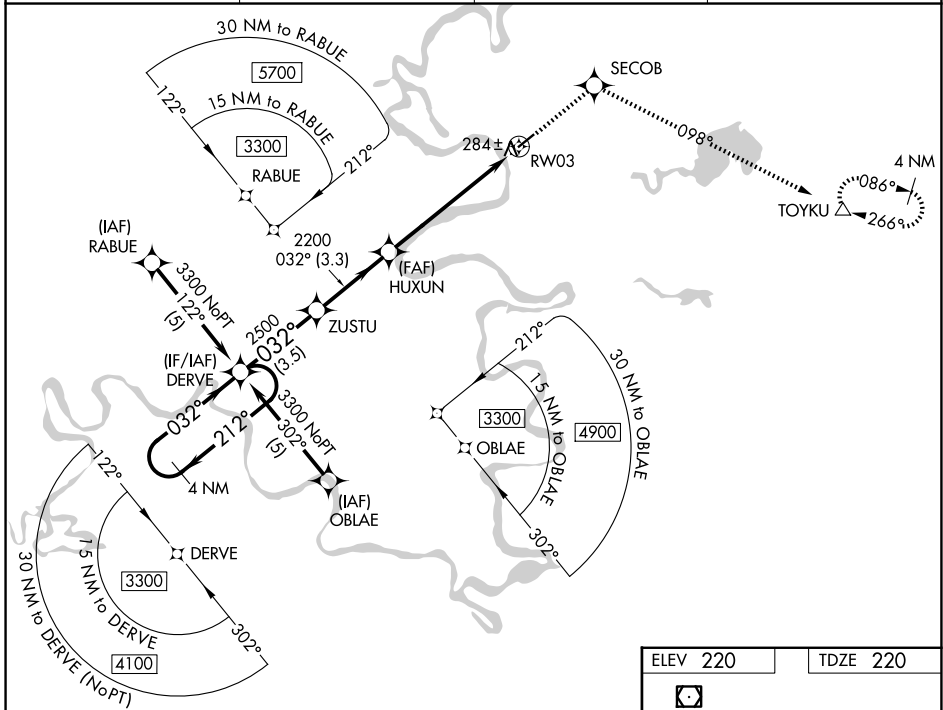
# RNAV (GPS) RWY 3

HUSLIA (HLA)(PAHL)

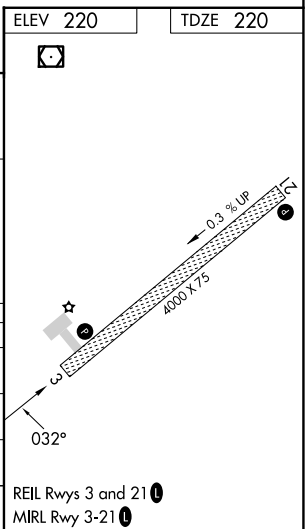
**▼** For uncompensated Baro-VNAV systems, LNAV/VNAV NA below -25°C (-13°F) or above 48°C (118°F). Helicopter visibility reduction below ¾ SM NA. DME/DME RNP-0.3 NA.

MISSED APPROACH: Climb to 3500 direct SECOB and via 098° track to TOYKU and hold, continue climb-in-hold to 3500.

AWOS-3P <b>135.75</b>	ANCHORAGE CENTER <b>127.0 290.2</b>	FAIRBANKS RADIO <b>122.4</b>	CTAF <b>122.8 0</b>
--------------------------	----------------------------------------	---------------------------------	------------------------



CATEGORY	A	B	C	D
LPV DA		525-1	305 (400-1)	
LNAV/VNAV DA		567-1¼	347 (400-1¼)	
LNAV MDA		540-1	320 (400-1)	
CIRCLING	600-1 380 (400-1)	680-1 460 (500-1)	680-1½ 460 (500-1½)	780-2 560 (600-2)



AK, 14 MAY 2026 to 09 JUL 2026

AK, 14 MAY 2026 to 09 JUL 2026