

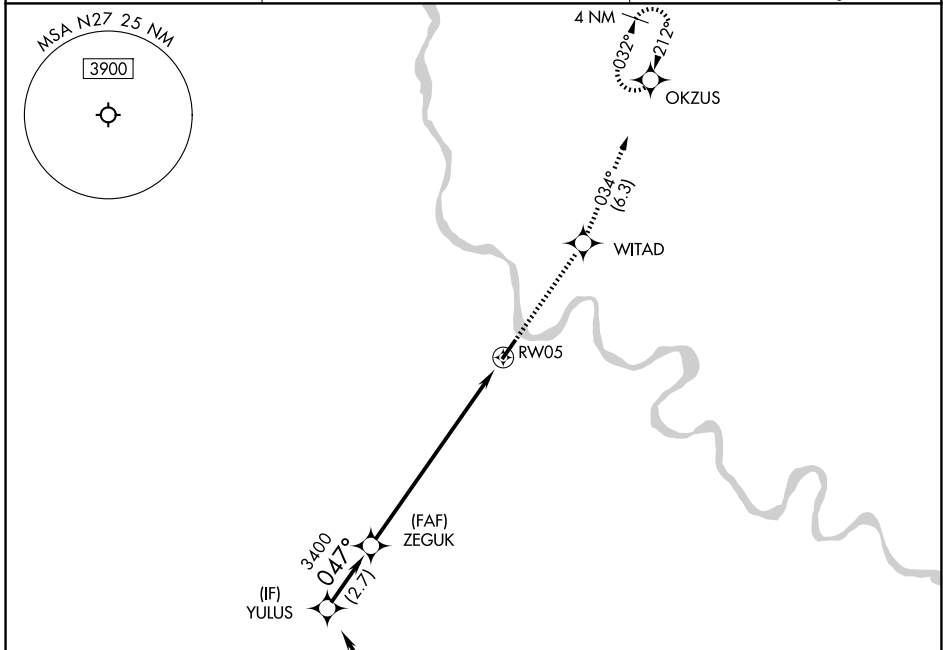
APP CRS	Rwy Ldg	N/A
047°	TDZE	N/A
	Apt Elev	730

RNAV (GPS)-A

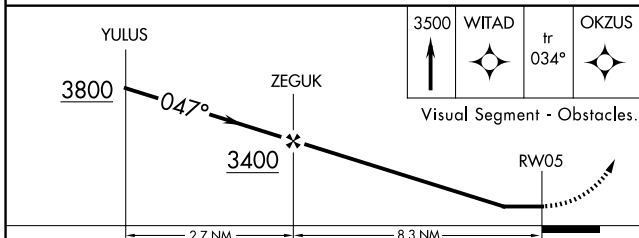
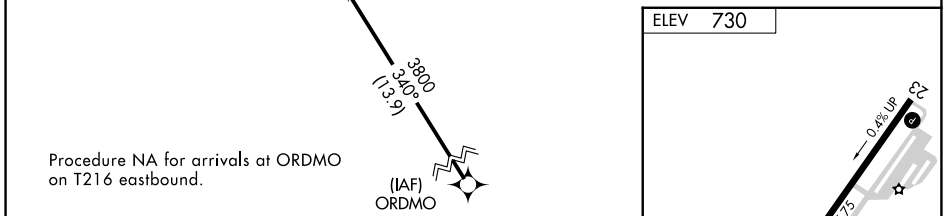
BRADFORD COUNTY (N27)

RNP APCH - GPS.	MISSED APPROACH: Climb to 3500 direct WITAD and on track 034° to OKZUS and hold.
<p>▼ When local altimeter setting not received, use Elmira altimeter setting and increase all MDAs 120 feet. Rwy 5 helicopter visibility reduction below 1 SM NA. Procedure NA at night.</p> <p>▲ NA</p>	

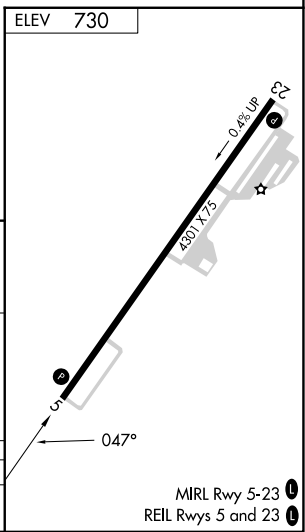
AWOS-3 119.925	BINGHAMTON APP CON ★ 118.6 257.625	UNICOM 123.0 (CTAF) ①
--------------------------	--	---------------------------------



Procedure NA for arrivals at ORDMO on T216 eastbound.



CATEGORY	A	B	C	D
CIRCLING	2680-1¼ 1950 (2000-1¼)	2680-1½ 1950 (2000-1½)	NA	



MIRL Rwy 5-23 ①
REIL Rwy 5 and 23 ①

NE-4, 14 MAY 2026 to 11 JUN 2026

NE-4, 14 MAY 2026 to 11 JUN 2026