

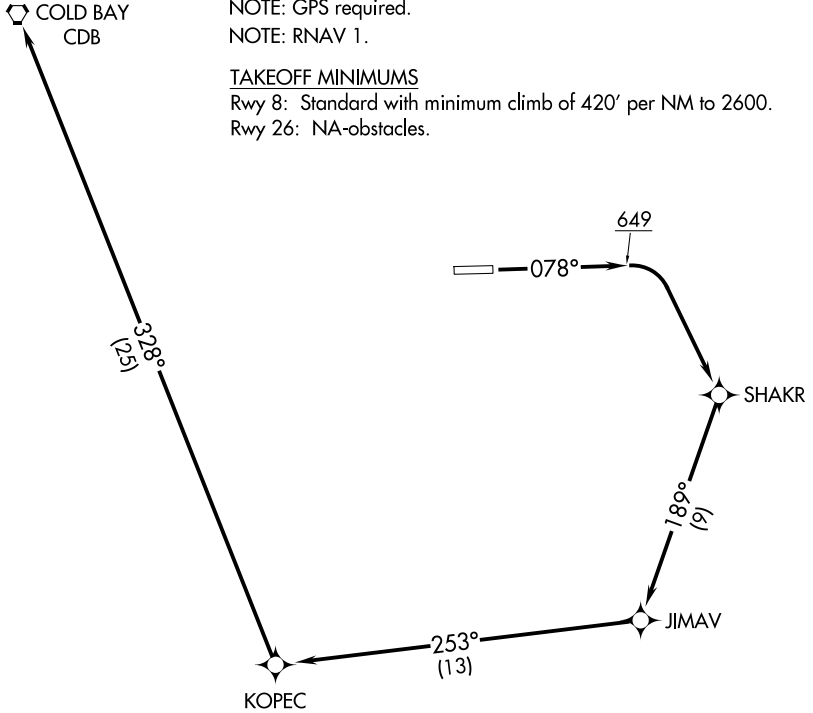
COLD BAY TWO DEPARTURE (OBSTACLE) (RNAV)

ANCHORAGE CENTER
118.5 278.3

NOTE: Cat C & D NA.
NOTE: GPS required.
NOTE: RNAV 1.

TAKEOFF MINIMUMS

Rwy 8: Standard with minimum climb of 420' per NM to 2600.
Rwy 26: NA-obstacles.



TAKEOFF OBSTACLE NOTES

- Rwy 8: Fence, tree, vegetation beginning 14' from DER, 77' left of centerline, up to 8' AGL/154' MSL.
- Trees 20' from DER, 286' right of centerline, 8' AGL/145' MSL.
- Trees beginning 26' from DER, 163' right of centerline, up to 12' AGL/153' MSL.
- Fence 72' from DER, 385' left of centerline, 8' AGL/158' MSL.
- Tree, building, general utility beginning 99' from DER, 252' left of centerline, up to 11' AGL/167' MSL.
- Fence 129' from DER, 383' left of centerline, 10' AGL/168' MSL.
- Trees, fences, vegetation beginning 145' from DER, 361' left of centerline, up to 10' AGL/175' MSL.

NOTE: Chart not to scale.

DEPARTURE ROUTE DESCRIPTION

TAKEOFF RUNWAY 8: Climb on heading 078° to 649, then climbing right turn to 4000 direct SHAKR, and on track 189° to JIMAV, and on track 253° to KOPEC, and on track 328° to CDB VORTAC.

AK, 14 MAY 2026 to 09 JUL 2026

AK, 14 MAY 2026 to 09 JUL 2026