

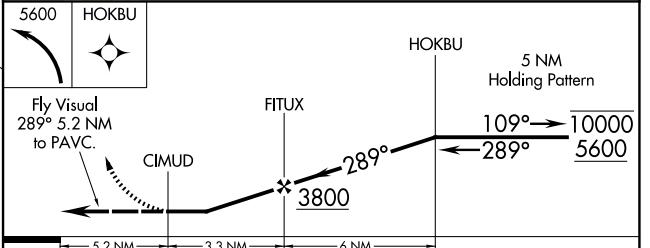
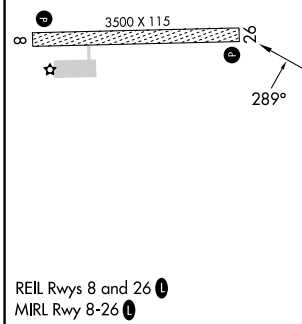
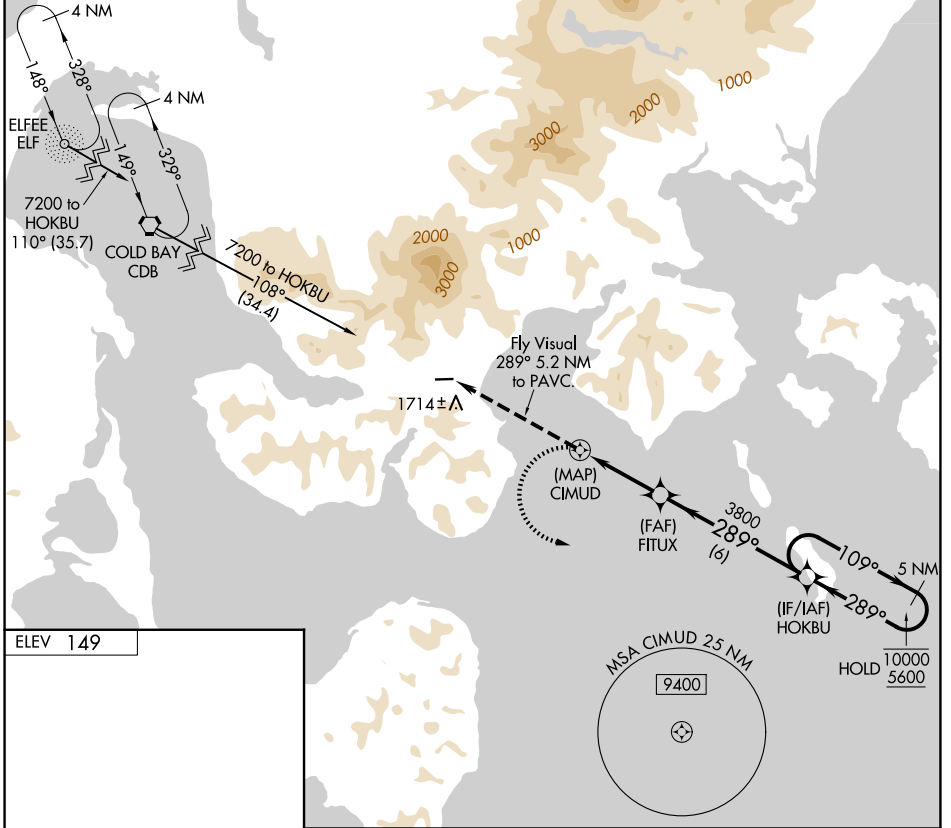
APP CRS <b>289°</b>	Rwy Ldg TDZE Apt Elev	N/A N/A <b>149</b>
------------------------	-----------------------------	--------------------------

# RNAV (GPS)-A

KING COVE (KVC)(PAVC)

RNP APCH - GPS.	MISSED APPROACH: Climbing left turn to 5600 direct HOKBU and hold, continue climb-in-hold to 5600.
Procedure NA at night. Circling NA north Rwy 8 and 26. -8°C	

AWOS-3P <b>118.325</b>	ANCHORAGE CENTER <b>118.5 278.3</b>	CTAF <b>122.9</b>
---------------------------	--	----------------------



CATEGORY	A	B	C	D
CIRCLING	2080-6 1931 (2000-6)	2520-6 2371 (2400-6)	NA	

AK, 14 MAY 2026 to 09 JUL 2026

AK, 14 MAY 2026 to 09 JUL 2026