

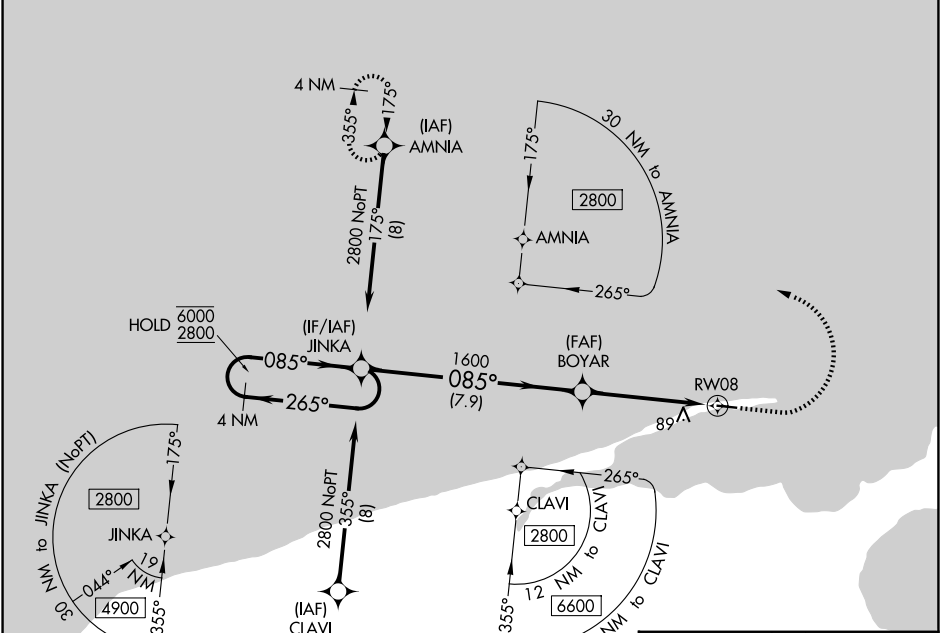
APP CRS	Rwy Ldg	4003
085°	TDZE	14
	Apt Elev	14

RNAV (GPS) RWY 8

NELSON LAGOON (OUL) (PAOU)

RNP APCH.	MISSED APPROACH: Climb to 500, then climbing left turn to 3000 direct AMNIA and hold.
▼ Procedure NA at night. Rwy 8 helicopter visibility reduction below 1 SM NA.	

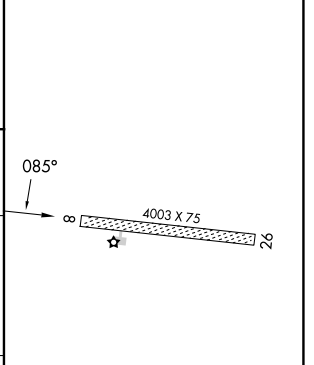
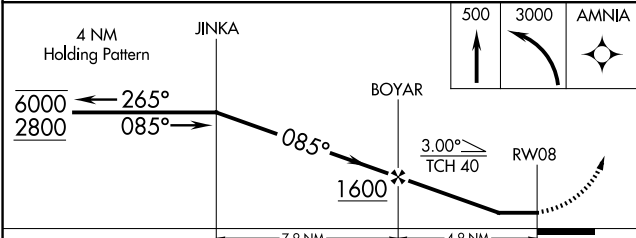
AWOS-3P 119.025	ANCHORAGE CENTER 118.5 278.3	CTAF 122.9 0
---------------------------	--	------------------------



AK, 14 MAY 2026 to 09 JUL 2026

AK, 14 MAY 2026 to 09 JUL 2026

ELEV 14	TDZE 14
---------	---------



CATEGORY	A	B	C	D
LNAV MDA	380-1 366 (400-1)			
CIRCLING	380-1 366 (400-1)	480-1 466 (500-1)	480-1½ 466 (500-1½)	580-2 566 (600-2)

MIRL Rwy 8-26 0