

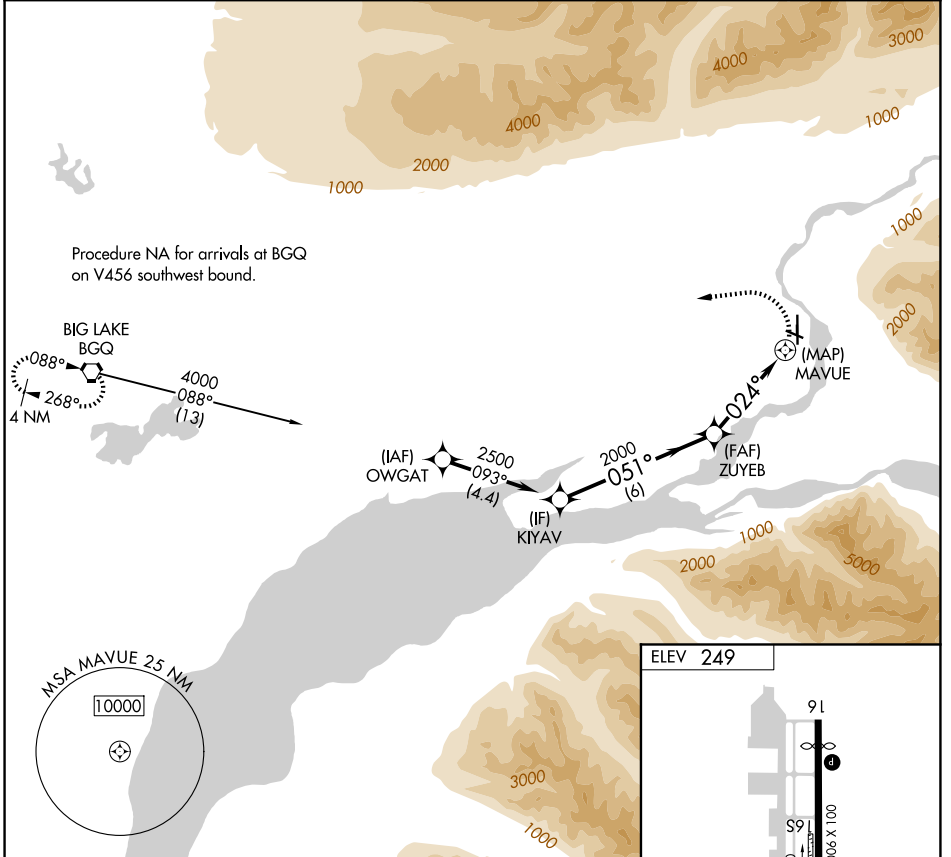
APP CRS <b>024°</b>	Rwy Ldg TDZE Apt Elev	<b>N/A</b> <b>N/A</b> <b>249</b>
------------------------	-----------------------------	--

# RNAV (GPS)-A

WARREN "BUD" WOODS PALMER MUNI (PAQ) (PAAQ)

RNP APCH.	MISSED APPROACH: Climbing left turn to 4500 direct BGQ VORTAC and hold.
<p><b>▼</b> Circling NA northeast of Rwy 16-28. <b>▲</b> Procedure NA at night.</p>	

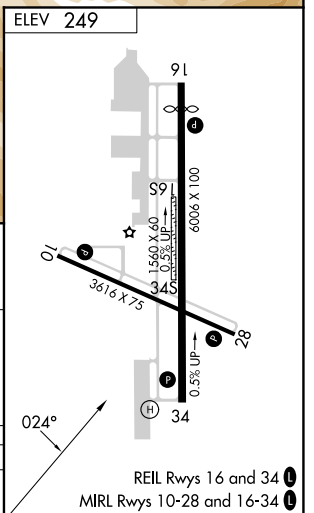
AFIS <b>134.75</b>	ANCHORAGE APP CON <b>118.6 290.5</b>	PALMER RADIO <b>123.6 (CTAF) 122.4</b>
-----------------------	---	---



AK, 14 MAY 2026 to 09 JUL 2026

AK, 14 MAY 2026 to 09 JUL 2026

	KIYAV	ZUYEB	MAVUE	4500	BGQ
	2500	2000	2000		
	051°		024°		
	6 NM		3.9 NM		
CATEGORY	A	B	C	D	
CIRCLING	860-1¼ 611 (700-1¼)	940-1¼ 691 (700-1¼)	1300-3	1051 (1100-3)	



# RNAV (GPS)-A