

RNAV (GPS) RWY 31

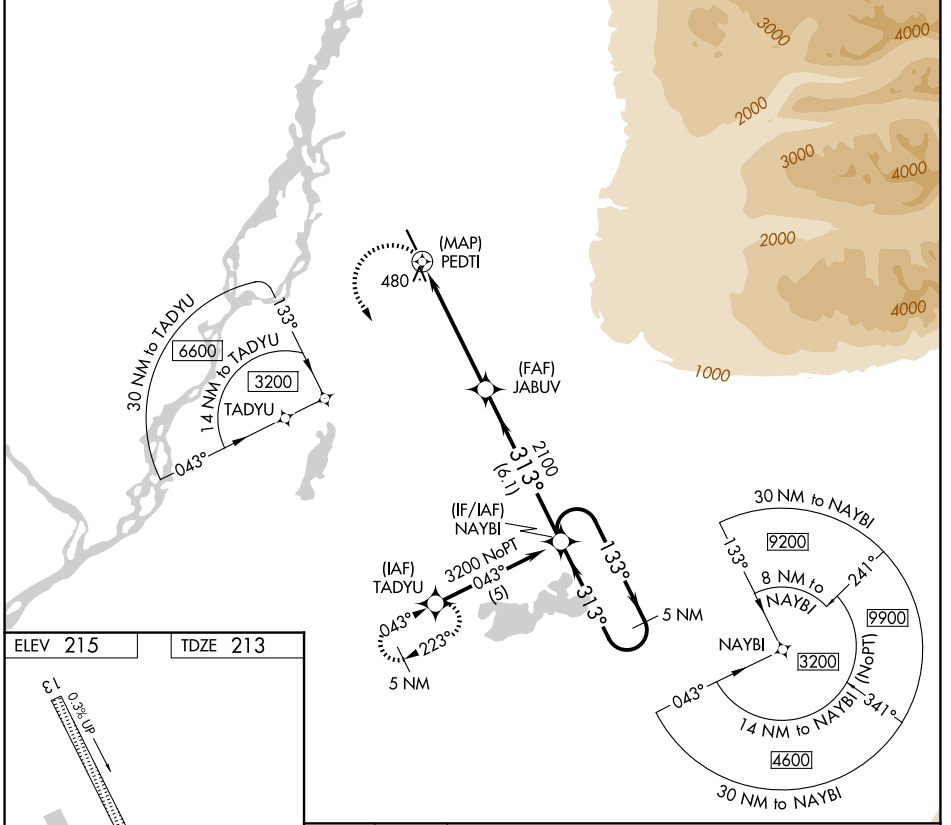
WILLOW (UUO)(PAUO)

APP CRS 313°	Rwy Ldg TDZE Apt Elev	4000 213 215
------------------------	-----------------------------	---

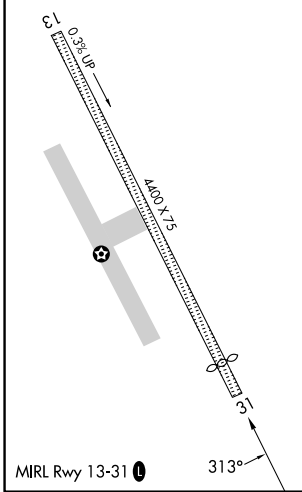
▼ Use Wasilla altimeter setting.
▲ NA Procedure NA at night.
 DME/DME RNP-0.3 NA.

MISSED APPROACH: Climbing left turn to 3200 direct TADYU and hold.

IYS/PAWS AWOS-3P 135.25	ANCHORAGE CENTER 133.7 279.6	CTAF 122.8 0
-----------------------------------	--	-------------------------------



ELEV 215	TDZE 213
----------	----------



3200 TADYU	JABUV		NAYBI 5 NM Holding Pattern	
	PEDTI		3200	
	3.05° TCH 50		2100	
	0.6	5.1 NM	6.1 NM	
CATEGORY	A	B	C	D
LNAV MDA	1220-1¼ 1007 (1100-1¼)	1220-1½ 1007 (1100-1½)	1220-3 1007 (1100-3)	NA
CIRCLING	1220-1¼ 1005 (1100-1¼)	1220-1½ 1005 (1100-1½)	1220-3 1005 (1100-3)	NA

AK, 14 MAY 2026 to 09 JUL 2026

AK, 14 MAY 2026 to 09 JUL 2026