

APP CRS <b>162°</b>	Rwy Ldg TDZE Apt Elev	<b>N/A</b> <b>N/A</b> <b>3614</b>
------------------------	-----------------------------	---

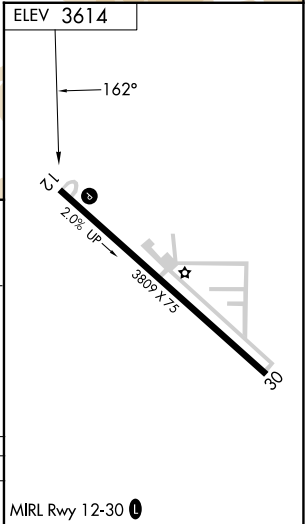
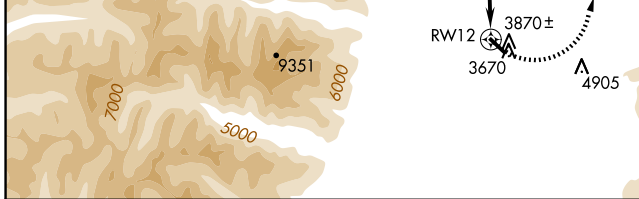
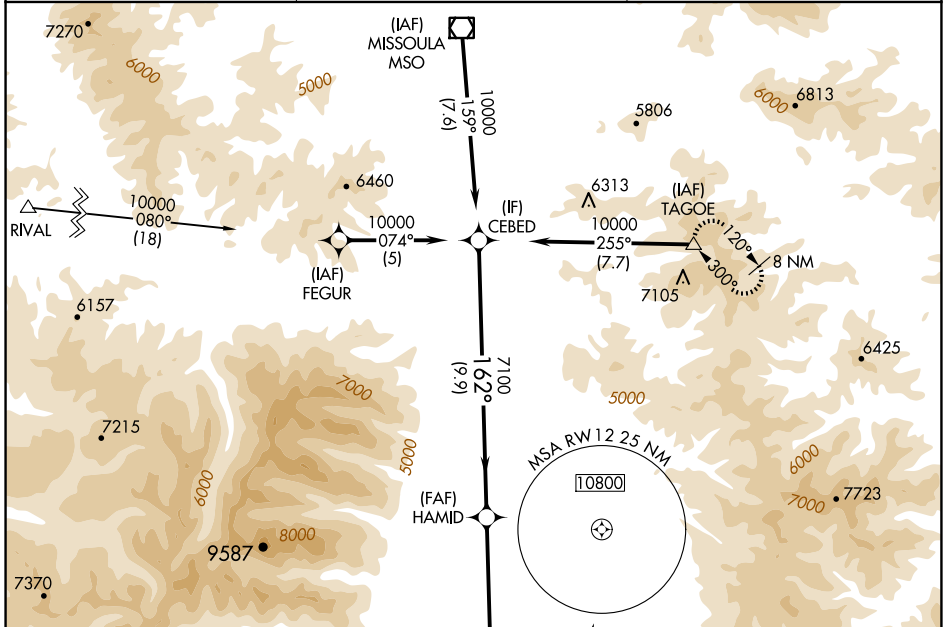
# RNAV (GPS)-A

STEVENSVILLE (32S)

RNP APCH.  
 NA Procedure NA at night.

MISSED APPROACH: Climbing left turn to 13000 direct TAGOE and hold, continue climb-in-hold to 13000.

AWOS-AV <b>120.925</b>	SPOKANE APP CON* <b>124.9 298.95</b>	UNICOM <b>122.8 (CTAF) 1</b>
---------------------------	---	---------------------------------



CATEGORY	A	B	C	D
CIRCLING	6400-1¼ 2786 (2800-1¼)	6400-1½ 2786 (2800-1½)	NA	

CEBED	HAMID	RW12	TAGOE
10000	7100	3670	13000
9.9 NM		5.3 NM	

NW-1, 14 MAY 2026 to 11 JUN 2026

NW-1, 14 MAY 2026 to 11 JUN 2026

MRL Rwy 12-30 1