

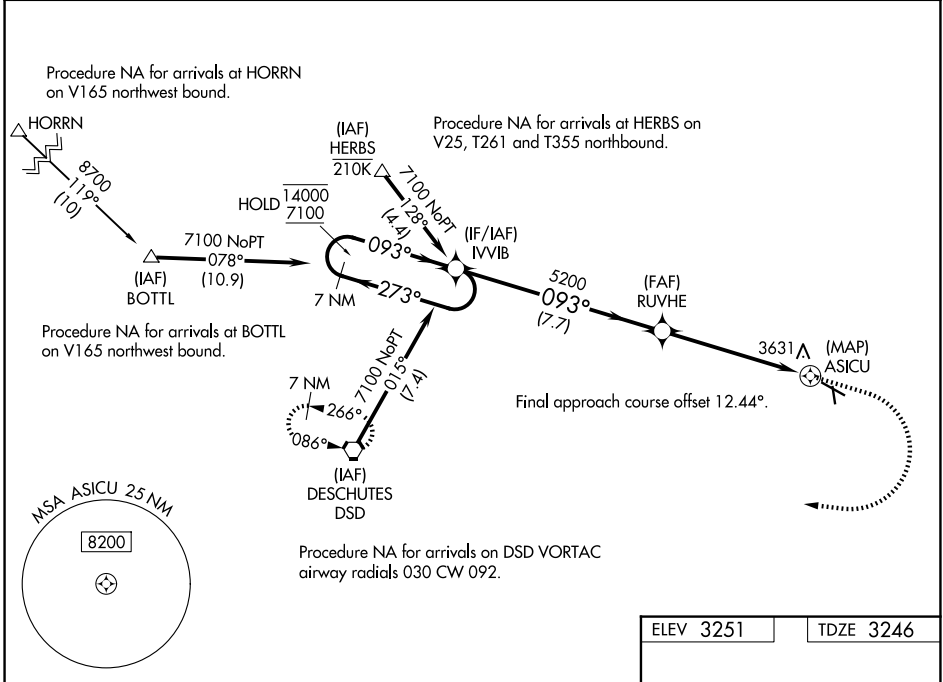
WAAS CH <b>60936</b> <b>W11A</b>	APP CRS <b>093°</b>	Rwy Ldg TDZE Apt Elev	<b>5405</b> <b>3246</b> <b>3251</b>
--	------------------------	-----------------------------	---

# RNAV (GPS) RWY 11

PRINEVILLE (S39)

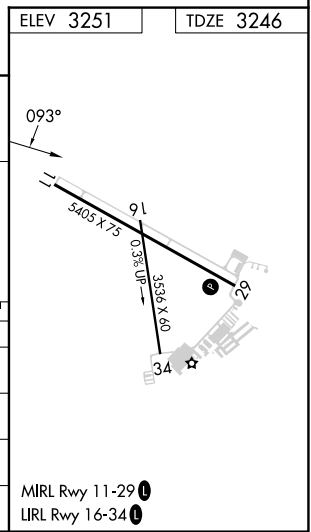
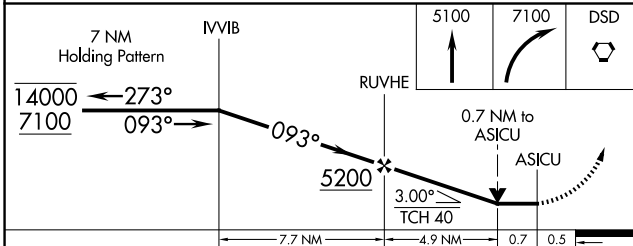
RNP APCH - GPS.	MISSED APPROACH: Climb to 5100 then climbing right turn to 7100 direct DSD VORTAC and hold.
<p>▼ Circling NA for Cat D south of Rwy 11-29.</p> <p>▲ Rwy 11 helicopter visibility reduction below 3/4 SM NA. Circling Rwy 16 NA at night.</p>	*Misted approach requires minimum climb of 215 feet per NM to 5400.

AWOS-3PT <b>118.325</b>	SEATTLE CENTER <b>126.15 269.475</b>	UNICOM <b>122.7 (CTAF) 0</b>
----------------------------	---	---------------------------------



NW-1, 14 MAY 2026 to 11 JUN 2026

NW-1, 14 MAY 2026 to 11 JUN 2026



CATEGORY	A	B	C	D
LP MDA*	3660-1 414 (500-1)		3660-1 1/8 414 (500-1 1/8)	
LP MDA	3760-1 514 (600-1)		3760-1 3/8 514 (600-1 3/8)	
LNAV MDA	3900-1 654 (700-1)		3900-1 7/8 654 (700-1 7/8)	
CIRCLING	3960-1 709 (800-1)	4040-1 789 (800-1)	4040-2 1/4 789 (800-2 1/4)	4040-2 1/2 789 (800-2 1/2)