

# RNAV (GPS) RWY 29

PRINEVILLE (S39)

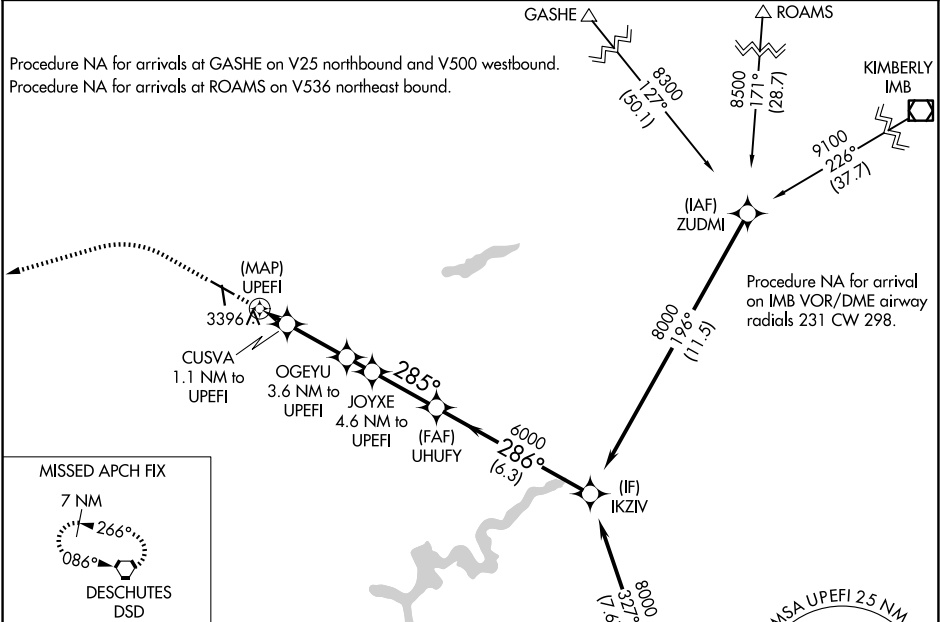
APP CRS <b>285°</b>	Rwy Ldg TDZE Apt Elev	<b>5405</b> <b>3240</b> <b>3251</b>
------------------------	-----------------------------	-------------------------------------------

RNP APCH - GPS.

**∇** Circling NA for Cat D south of Rwy 11-29.  
**⚠** Circling Rwy 16 NA at night.

MISSED APPROACH: Climb to 4700 then climbing left turn to 7100 direct DSD VORTAC and hold.

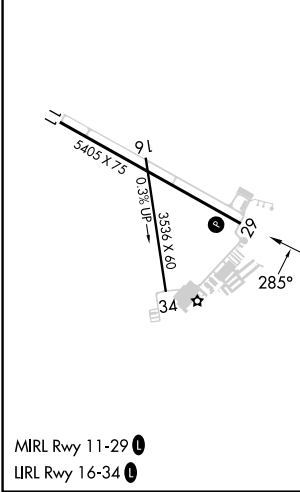
AWOS-3PT <b>118.325</b>	SEATTLE CENTER <b>126.15 269.475</b>	UNICOM <b>122.7 (CTAF)</b>
----------------------------	-----------------------------------------	-------------------------------



NW-1, 14 MAY 2026 to 11 JUN 2026

NW-1, 14 MAY 2026 to 11 JUN 2026

ELEV 3251	TDZE 3240
-----------	-----------



4700	7100	DSD			
CUSVA 1.1 NM to UPEFI		OGEYU 3.6 NM to UPEFI	JOYXE 4.6 NM to UPEFI	UHFUY	IKZIV
3980	4780	5140	6000	8000	
1.1 NM	1.1 NM	2.5 NM	1 NM	2.6 NM	6.3 NM
CATEGORY	A	B	C	D	
LNAV MDA	3700-1¼	460 (500-1¼)	3700-1⅓	460 (500-1⅓)	
CIRCLING	3960-1¼ 709 (800-1¼)	4040-1¼ 789 (800-1¼)	4040-2¼ 789 (800-2¼)	4040-2½ 789 (800-2½)	