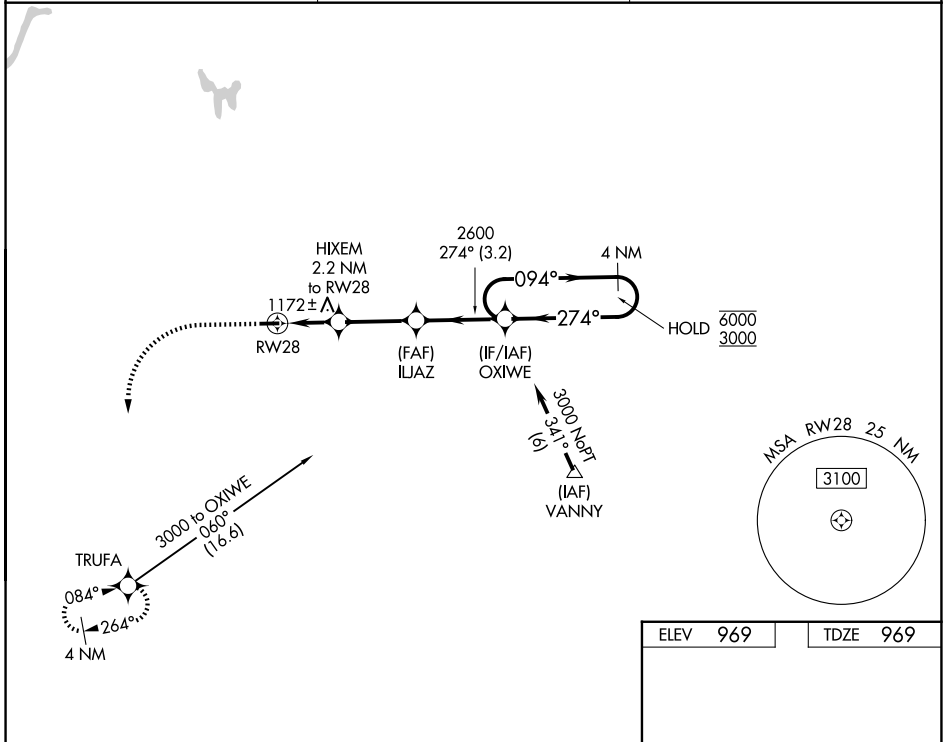


APP CRS 274°	Rwy Ldg TDZE Apt Elev	3499 969 969
------------------------	-----------------------------	---

RNAV (GPS) RWY 28

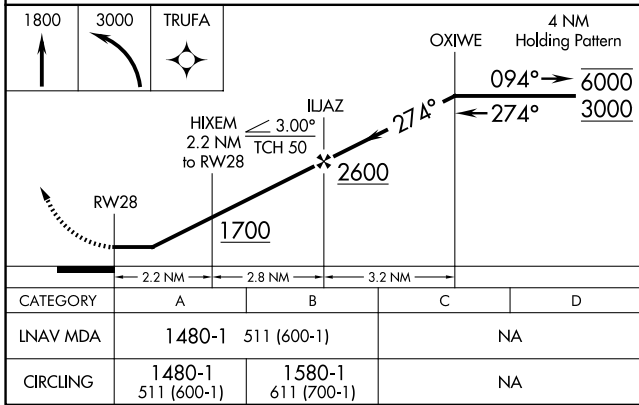
LAKEVIEW/GRIFFITH FLD (13C)

RNP APCH - GPS.		MISSED APPROACH: Climb to 1800 then climbing left turn to 3000 direct TRUFA and hold.
<p>▽ Procedure NA at night. Use Big Rapids altimeter setting; when not received, use Mount Pleasant altimeter setting and increase all MDAs 60 feet. Rwy 28 helicopter visibility reduction below 1 SM NA.</p>	<p>RQB AWOS-3P 125.875</p>	<p>GREAT LAKES APP CON * 124.6 257.6</p>
		<p>UNICOM 122.8 (CTAF) 0</p>



EC-1, 14 MAY 2026 to 11 JUN 2026

EC-1, 14 MAY 2026 to 11 JUN 2026



ELEV	969	TDZE	969
------	-----	------	-----

MIRL Rwy 10-28 0
REIL Rwy 10 and 28 0