

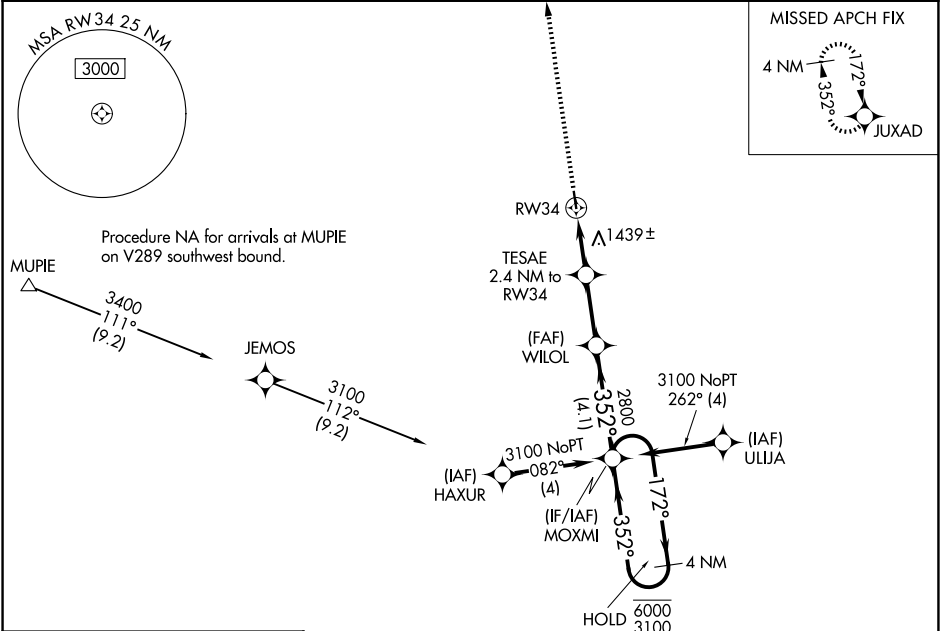
WAAS CH <b>72728</b> <b>W34A</b>	APP CRS <b>352°</b>	Rwy Ldg TDZE Apt Elev	<b>3500</b> <b>1191</b> <b>1195</b>
--	------------------------	-----------------------------	---

# RNAV (GPS) RWY 34

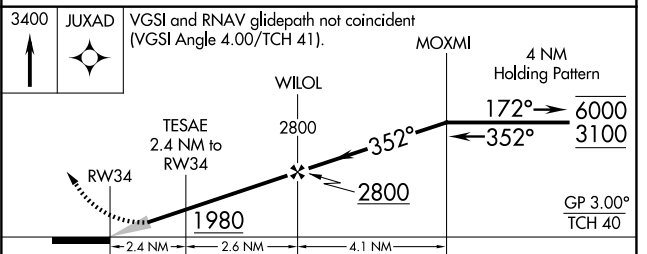
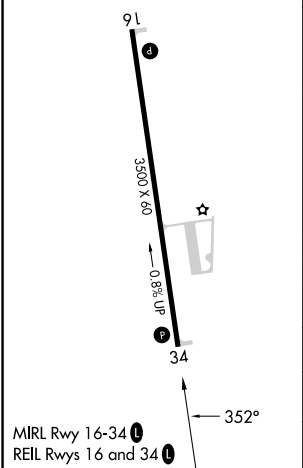
HOUSTON MEML (M48)

RNP APCH-GPS.	MISSED APPROACH: Climb to 3400 direct JUXAD and hold.
<p>Baro-VNAV NA. Use Fort Leonard Wood altimeter setting, when not received use West Plains altimeter setting.</p>	

TBN ASOS <b>118.7 229.4</b>	KANSAS CITY CENTER <b>128.35 284.675</b>	CTAF <b>122.90</b>
--------------------------------	---	-----------------------



ELEV 1195	TDZE 1191
-----------	-----------



CATEGORY	A	B	C	D
LPV DA	1509-1	318 (400-1)		NA
LNAV/VNAV DA	1740-1 <sup>5</sup> / <sub>8</sub>	549 (600-1 <sup>5</sup> / <sub>8</sub> )		NA
LNAV MDA	1740-1	549 (600-1)		NA
CIRCLING	1760-1	1880-1		NA
	565 (600-1)	685 (700-1)		

NC-3, 14 MAY 2026 to 11 JUN 2026

NC-3, 14 MAY 2026 to 11 JUN 2026