

APP CRS	Rwy Idg	<b>4000</b>
<b>169°</b>	TDZE	<b>323</b>
	Apt Elev	<b>323</b>

# RNAV (GPS) RWY 17

SMITHVILLE CRAWFORD MUNI (84R)

RNP APCH - GPS.

**▼** Rwy 17 helicopter visibility reduction below 1 SM NA.  
**▲** NA Straight-in Rwy 17 NA at night, Circling Rwy 17 NA at night.

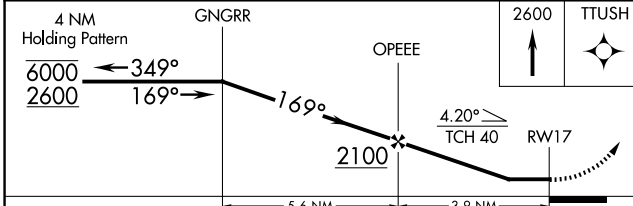
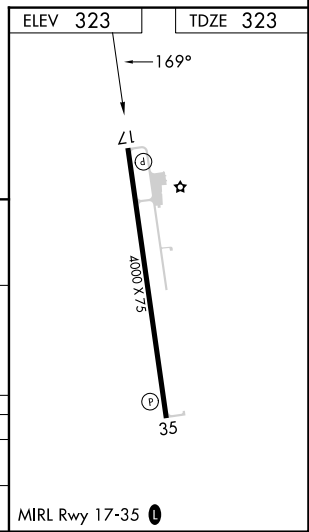
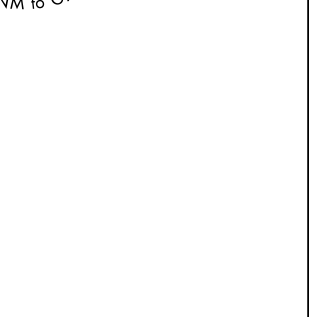
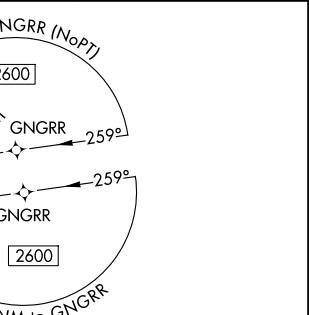
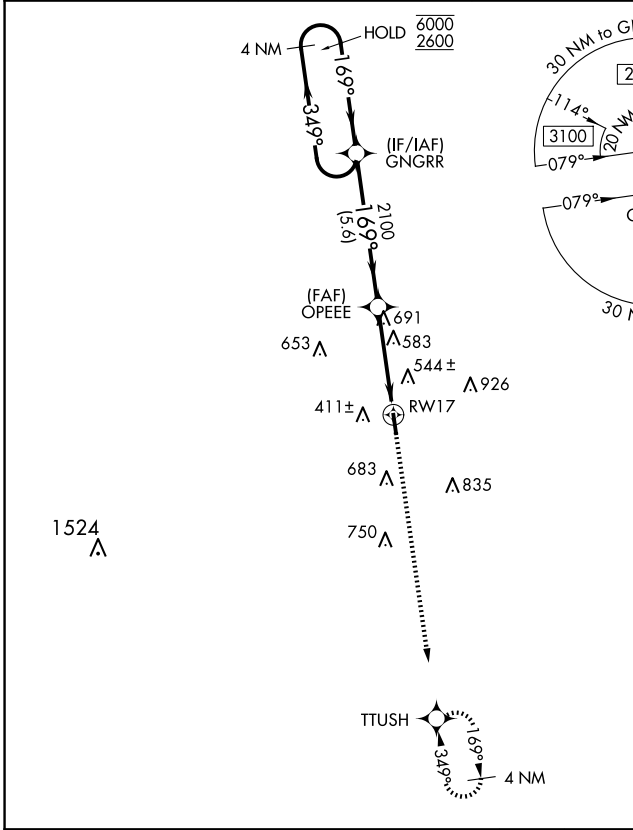
MISSED APPROACH: Climb to 2600 direct TTUSH and hold.

GYB AWOS-3  
**119.225**

AUSTIN APP CON  
**120.875 270.25**

CTAF  
**122.9**

**123.30**



CATEGORY	A	B	C	D
LNVA MDA	900-1	577 (600-1)		NA
CIRCLING	960-1	637 (700-1)		NA

SC-3, 14 MAY 2026 to 11 JUN 2026

SC-3, 14 MAY 2026 to 11 JUN 2026