

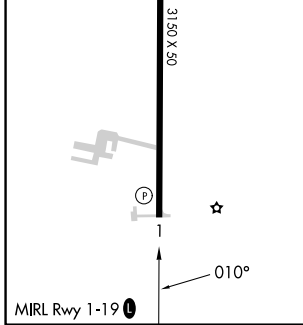
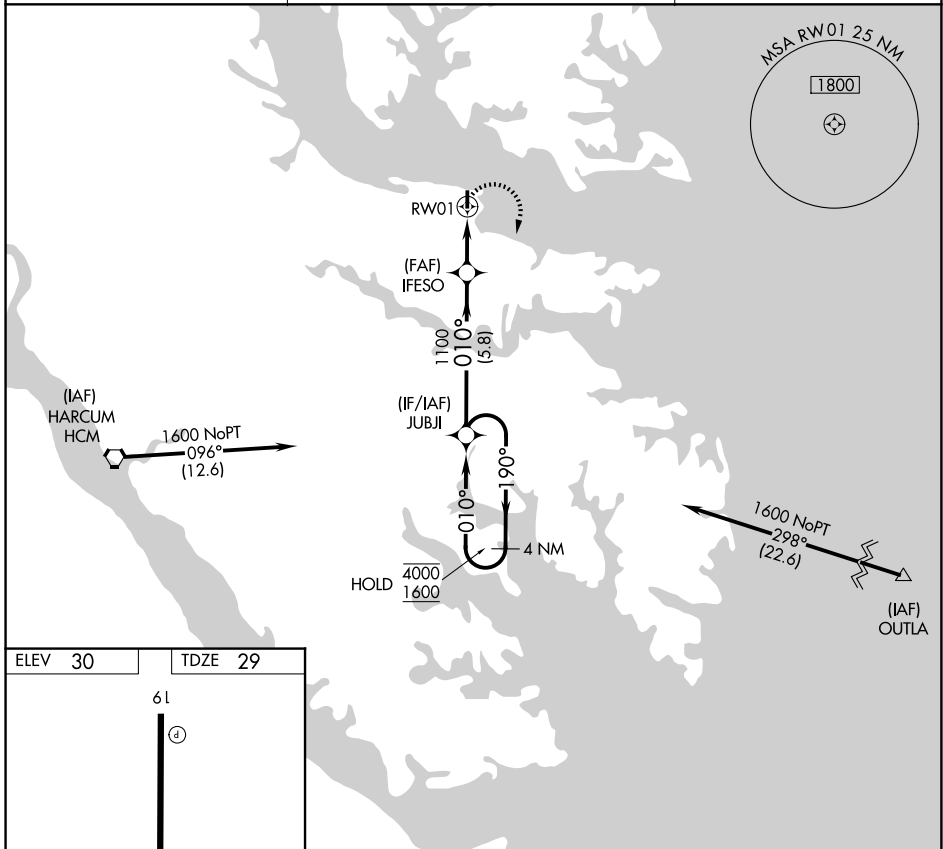
APP CRS	Rwy Ldg	3150
010°	TDZE	29
	Apt Elev	30

RNAV (GPS) RWY 1

HUMMEL FLD (W75)

RNP APCH - GPS.	MISSED APPROACH: Climbing right turn to 1600 direct JUBJI and hold.
<p>▼ Procedure NA at night.</p> <p>▲ Rwy 1 helicopter visibility reduction below 1 SM NA.</p>	

AWOS-3 118.45	NORFOLK APP CON 126.05 370.925	UNICOM 123.0 (CTAF)
-------------------------	--	-------------------------------



1600	JUBJI	4 NM Holding Pattern		
	IFESO	JUBJI		
RWY01	1100	4000		
2.4 NM	5.8 NM	1600		
CATEGORY	A	B	C	D
RNAV MDA	1040-3	1011 (1100-3)		NA
CIRCLING	1040-3	1010 (1100-3)		NA

NE-3, 14 MAY 2026 to 11 JUN 2026

NE-3, 14 MAY 2026 to 11 JUN 2026