

WAAS CH <b>78036</b> <b>W02A</b>	APP CRS <b>014°</b>	Rwy Ldg TDZE Apt Elev	<b>3740</b> <b>163</b> <b>175</b>
----------------------------------------	------------------------	-----------------------------	-----------------------------------------

# RNAV (GPS) RWY 2

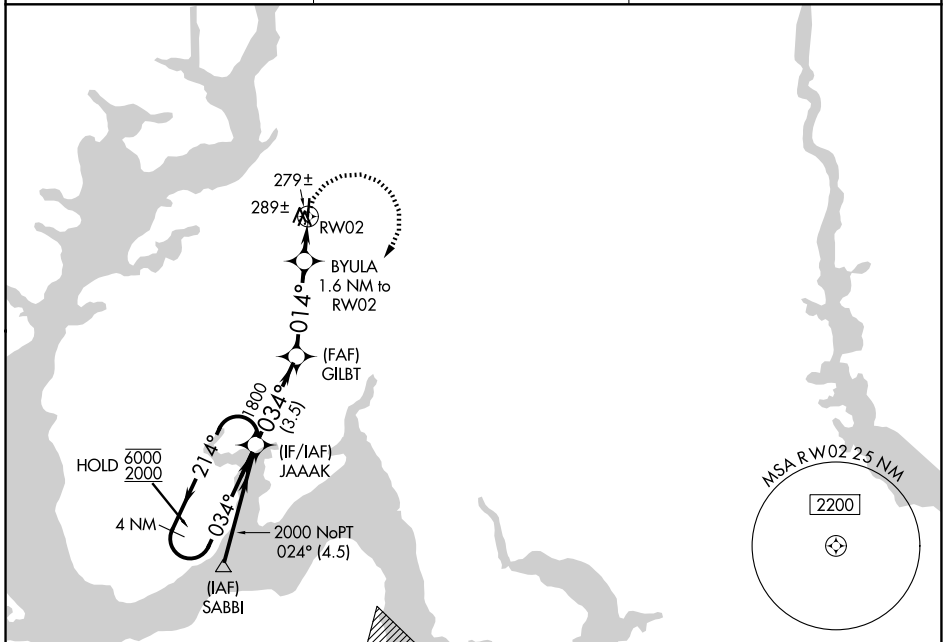
MARYLAND (2W5)

RNP APCH.

**NA** Circling Rwy 20 NA at night. Rwy 2 helicopter visibility reduction below 3/4 SM NA. Use Ronald Reagan Washington Ntl altimeter setting.

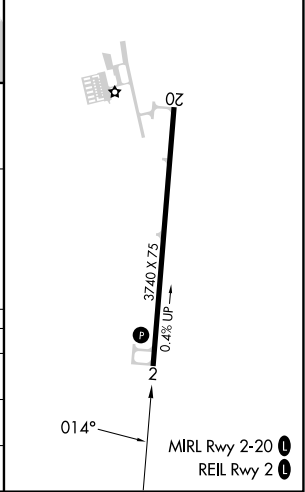
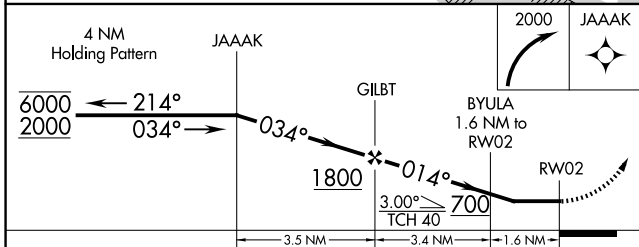
MISSED APPROACH: Climbing right turn to 2000 direct JAAAK and hold.

DCA ASOS <b>132.65</b>	POTOMAC APP CON <b>124.7 338.2</b>	UNICOM <b>122.7</b> (CTAF) <b>0</b>
---------------------------	---------------------------------------	----------------------------------------



Procedure NA for arrivals at SABBI on V376 southbound.

ELEV	175	TDZE	163
------	-----	------	-----



CATEGORY	A	B	C	D
LP MDA	600-1	437 (500-1)		NA
LNAV MDA	620-1	457 (500-1)		NA
CIRCLING	700-1	525 (600-1)		NA

NE-3, 14 MAY 2026 to 11 JUN 2026

NE-3, 14 MAY 2026 to 11 JUN 2026