

WAAS CH <b>63022</b> <b>W06A</b>	APP CRS <b>067°</b>	Rwy Ldg TDZE Apt Elev	<b>5500</b> <b>665</b> <b>665</b>
--	------------------------	-----------------------------	---

**RNAV (GPS) RWY 6**  
SANDUSKY COUNTY RGNL (S24)

RNP APCH - GPS.

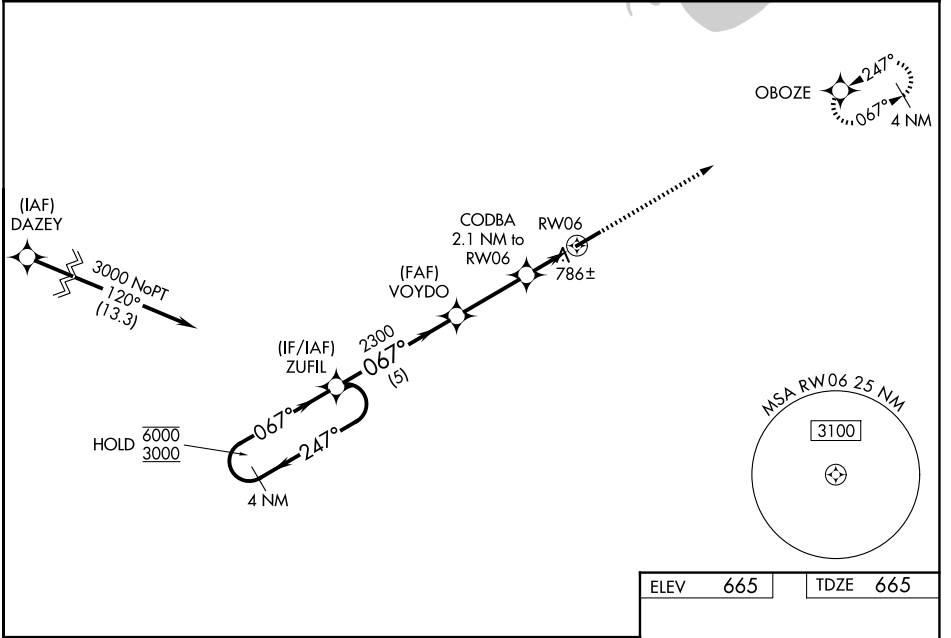
**⚠** Baro-VNAV and VDP NA when using TOL altimeter setting. For uncompensated Baro-VNAV systems, LNAV/VNAV NA below -16°C or above 54°C. When local altimeter setting not received, use TOL altimeter setting: increase LPV DA to 1008 feet and all visibilities 3/8 SM; increase LNAV/VNAV DA to 1041 feet and all visibilities 3/8 SM; increase all MDA 100 feet and LNAV visibility Cat C and D 3/8 SM and Circling visibility Cat C and D 1/2 SM.

**MISSED APPROACH:**  
Climb to 3000 direct  
OBOZE and hold.

AWOS-3P  
**119.575**

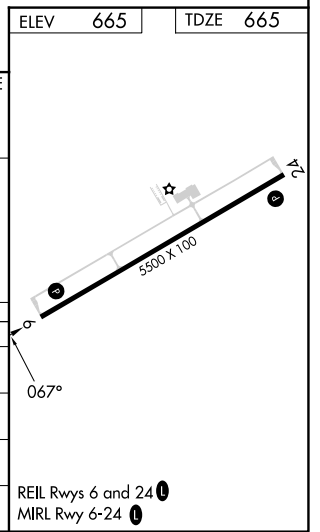
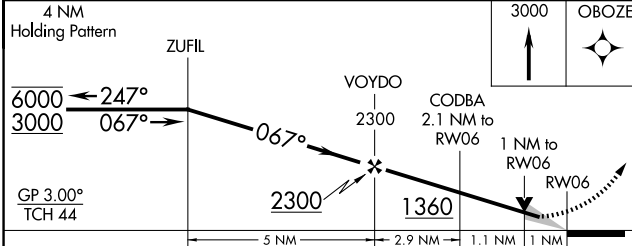
TOLEDO APP CON  
**126.1 307.0**

UNICOM  
**123.05 (CTAF) 0**



EC-2, 14 MAY 2026 to 11 JUN 2026

EC-2, 14 MAY 2026 to 11 JUN 2026



CATEGORY	A	B	C	D
LPV DA		915-3/4	250 (300-3/4)	
LNAV/VNAV DA		948-7/8	283 (300-7/8)	
LNAV MDA		1040-1	375 (400-1)	
CIRCLING	1120-1 455 (500-1)	1160-1 495 (500-1)	1380-2 715 (800-2)	1380-2 1/4 715 (800-2 1/4)