

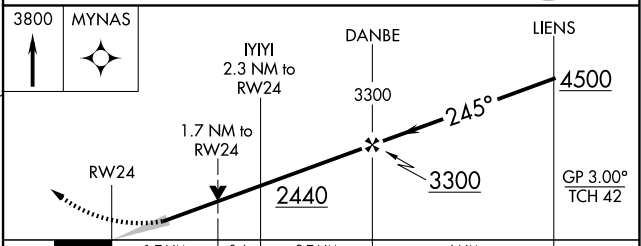
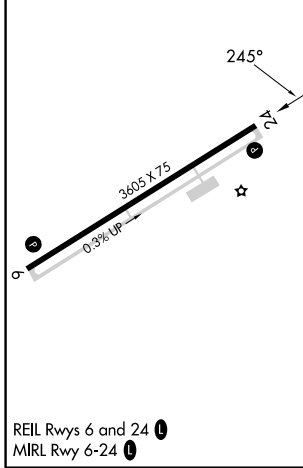
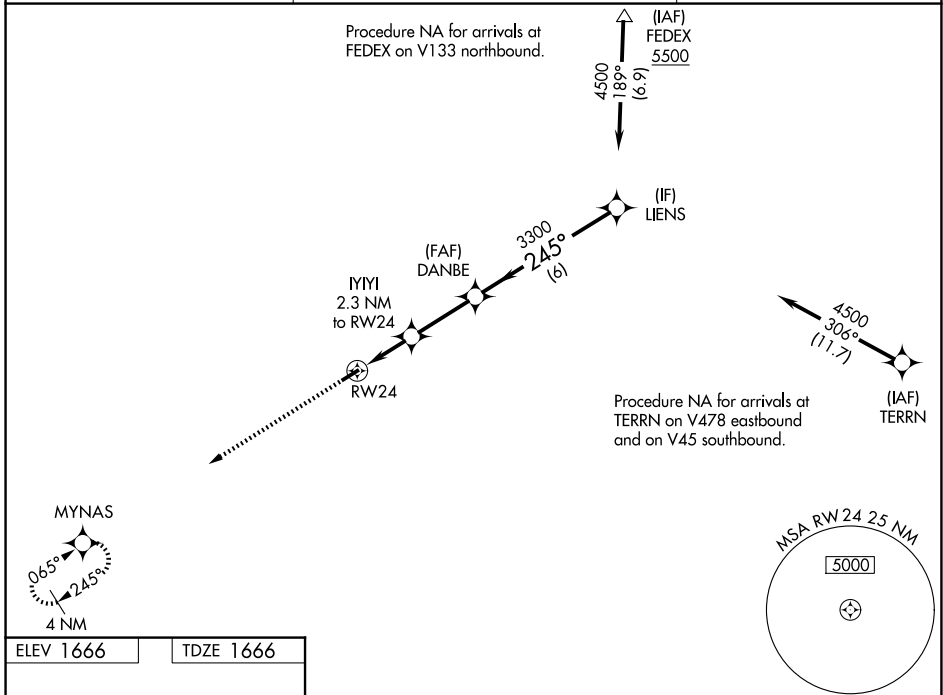
WAAS CH <b>70431</b> <b>W24A</b>	APP CRS <b>245°</b>	Rwy Ldg TDZE Apt Elev	<b>3605</b> <b>1666</b> <b>1666</b>
--	------------------------	-----------------------------	---

# RNAV (GPS) RWY 24

LOGAN COUNTY (6L4)

RNP APCH - GPS.		MISSED APPROACH: Climb to 3800 direct MYNAS and hold.
<p>⚠ For uncompensated Baro-VNAV systems, LNAV/VNAV NA below -18°C or above 54°C.</p>		

AWOS-3PT <b>119.375</b>	CHARLESTON APP CON <b>119.2 269.125</b>	CTAF <b>122.9</b>
----------------------------	--	-------------------



CATEGORY	A	B	C	D
LPV DA	1916- <sup>3</sup> / <sub>4</sub>		250 (300- <sup>3</sup> / <sub>4</sub> )	NA
LNAV/VNAV DA	2240-1 <sup>5</sup> / <sub>8</sub>		574 (600-1 <sup>5</sup> / <sub>8</sub> )	NA
LNAV MDA	2240-1	574 (600-1)	2240-1 <sup>5</sup> / <sub>8</sub> 574 (600-1 <sup>5</sup> / <sub>8</sub> )	NA
CIRCLING	2360-1 694 (700-1)	2440-1 774 (800-1)	2720-3 1054 (1100-3)	NA

NE-4, 14 MAY 2026 to 11 JUN 2026

NE-4, 14 MAY 2026 to 11 JUN 2026