

| | | | |
|--|------------------------|-----------------------------|---|
| WAAS CH 40438 W06A | APP CRS 065° | Rwy Ldg TDZE Apt Elev | 3605 1665 1666 |
|--|------------------------|-----------------------------|---|

RNAV (GPS) RWY 6

LOGAN COUNTY (6L4)

RNP APCH - GPS.

⚠ Rwy 6 helicopter visibility reduction below 3/4 SM NA. Baro-VNAV NA. When local altimeter setting not received, use Pineville altimeter setting: increase LPV DA to 2079 feet and LNAV/VNAV DA to 2032 feet and LPV and LNAV/VNAV all Cats visibilities 1/4 SM; increase all MDA 80 feet and LNAV Cat C visibility and Circling Cat B visibility 1/4 SM. VDP NA when using Pineville altimeter setting.

MISSED APPROACH:
Climb to 4500 direct LIENS and hold.

AWOS-3PT
119,375

CHARLESTON APP CON
119.2 269.125

CTAF **122.9**

CELLI

Procedure NA for arrivals at CELLI on V115 northeast bound and on V478 westbound.



3800
174°
(1.3)



3800
135°
(6)



3000
065°
(1)



3800
355°
(6)



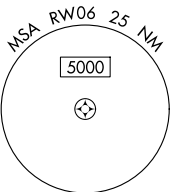
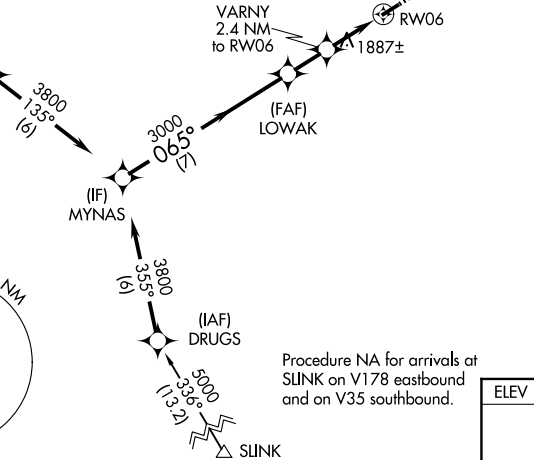
5000
336°
(1.2)



3000
065°
(1)

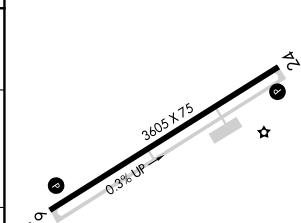
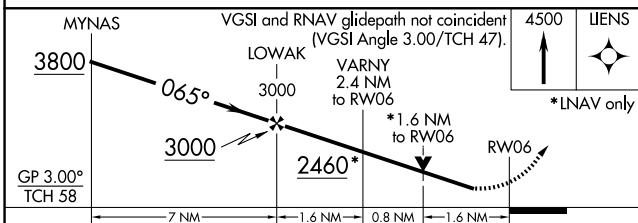


2.4 NM to RW06



Procedure NA for arrivals at SINK on V178 eastbound and on V35 southbound.

| | | | |
|------|------|------|------|
| ELEV | 1666 | TDZE | 1665 |
|------|------|------|------|



| CATEGORY | A | B | C | D |
|--------------|-----------------------|-----------------------|-------------------------------|----|
| LPV DA | 2010-1 1/8 | | 345 (400-1 1/8) | NA |
| LNAV/VNAV DA | 1963-1 | | 298 (300-1) | NA |
| LNAV MDA | 2200-1 | 535 (600-1) | 2200-1 1/2 535 (600-1 1/2) | NA |
| CIRCLING | 2360-1 694 (700-1) | 2400-1 734 (800-1) | 2720-3 1054 (1100-3) | NA |

REIL Rwy 6 and 24 **1**
MIRL Rwy 6-24 **1**

NE-4, 14 MAY 2026 to 11 JUN 2026

NE-4, 14 MAY 2026 to 11 JUN 2026