

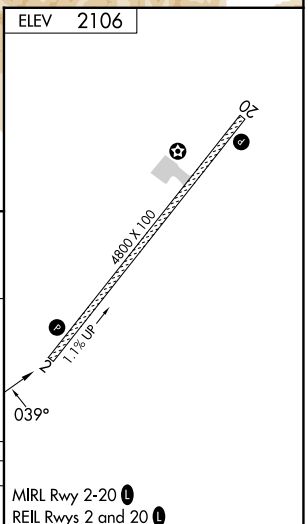
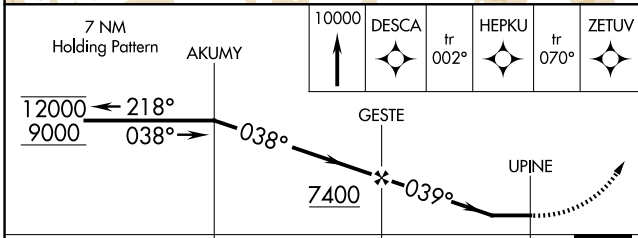
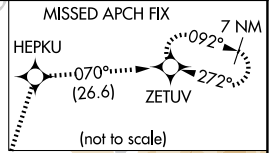
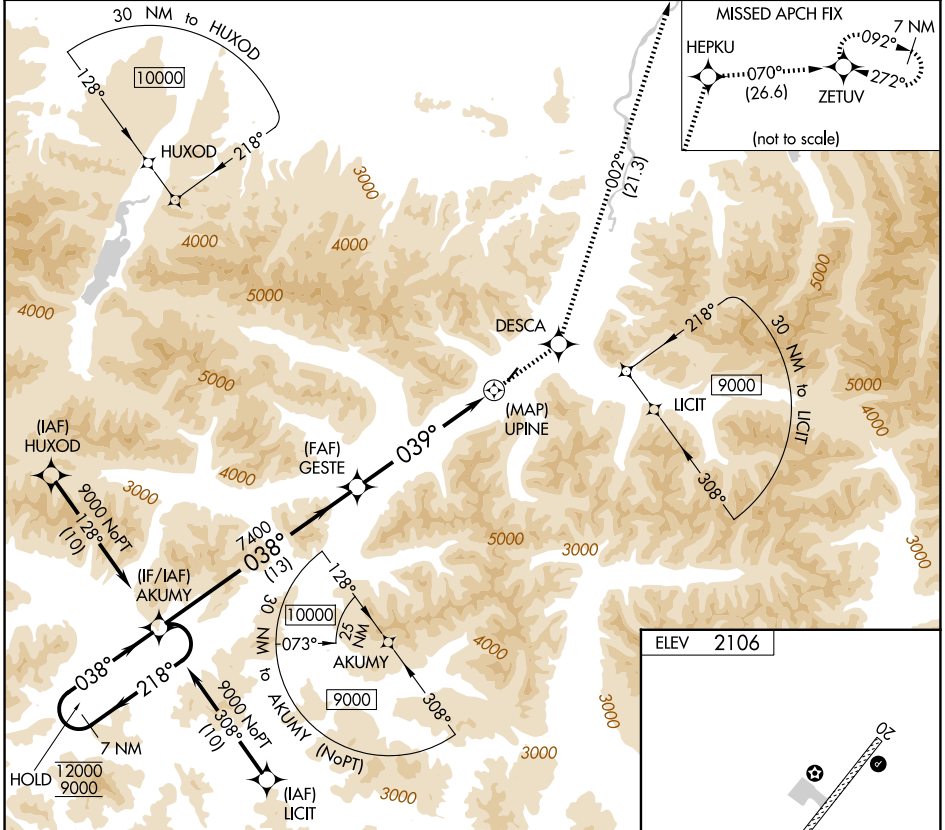
APP CRS	Rwy Ldg	N/A
039°	TDZE	N/A
	Apt Elev	2106

RNAV (GPS)-A

ANAKTUVUK PASS (AKP) (PAKP)

RNP APCH.		FAIRBANKS RADIO		UNICOM	
<p>Circling NA west of Rwy 2-20. -31°C</p>		<p>122.15</p>		<p>122.8 (CTAF)</p>	
<p>AWOS-3P 135.75</p>		<p>ANCHORAGE CENTER 124.6 352.0</p>			

MISSED APPROACH: Climb to 10000 direct DESCAL and on track 002° to HEPKU and track 070° to ZETUV and hold.



CATEGORY	A	B	C	D
CIRCLING	5620-1¼ 3514 (4000-1¼)	5620-1½ 3514 (4000-1½)	6240-3	4134 (4200-3)

MIRL Rwy 2-20
REIL Rws 2 and 20

AK, 14 MAY 2026 to 09 JUL 2026

AK, 14 MAY 2026 to 09 JUL 2026