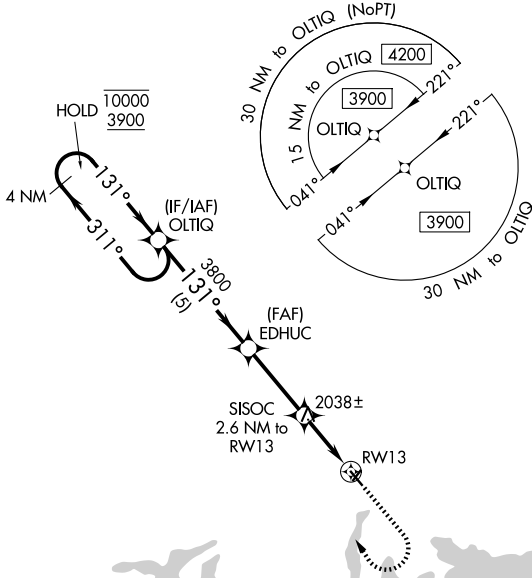


| | | | |
|--|------------------------|-----------------------------|---|
| WAAS CH 66040 W13A | APP CRS 131° | Rwy Ldg TDZE Apt Elev | 3699 1937 1937 |
|--|------------------------|-----------------------------|---|

RNAV (GPS) RWY 13

GARRISON MUNI (D05)

| | | |
|--|--|------------------------|
| RNP APCH | MISSED APPROACH: Climb to 2500 then climbing right turn to 3900 direct OLTIQ and hold. | |
| <p>▼ Circling NA to Rwys 3 and 21. Baro-VNAV NA.</p> <p>▲ NA Use Minot Intl altimeter setting.</p> | | |
| MOT ASOS 118.725 | MINNEAPOLIS CENTER 127.6 279.6 | CTAF 122.9 0 |



NC-1, 14 MAY 2026 to 11 JUN 2026

NC-1, 14 MAY 2026 to 11 JUN 2026

| | | | |
|--|-----------------------|-----------------------|----|
| ELEV 1937 | | TDZE 1937 | |
| <p>VGSI and RNAV glidepath not coincident (VGSI Angle 3.00/TCH 29).</p> <p>4 NM Holding Pattern</p> <p>OLTIQ EDHUC SISOC 2.6 NM to RWY13 RWY13</p> <p>10000 ← 311° → 3900</p> <p>GP 3.00° TCH 40</p> <p>3800</p> <p>*2800</p> <p>5 NM 3.1 NM 2.6 NM</p> <p>2500 3900 OLTIQ</p> <p>*LNAV only</p> | | | |
| | | | |
| CATEGORY | A | B | C |
| LPV DA | 2310-1 | 373 (400-1) | NA |
| LNAV/VNAV DA | 2310-1 | 373 (400-1) | NA |
| LNAV MDA | 2420-1 | 483 (500-1) | NA |
| CIRCLING | 2640-1 703 (800-1) | 2720-1 783 (800-1) | NA |

MIRL Rwy 13-31 0