

WAAS CH <b>49233</b> <b>W36A</b>	APP CRS <b>357°</b>	Rwy Ldg TDZE Apt Elev	<b>3400</b> <b>1220</b> <b>1221</b>
--	------------------------	-----------------------------	---

# RNAV (GPS) RWY 36

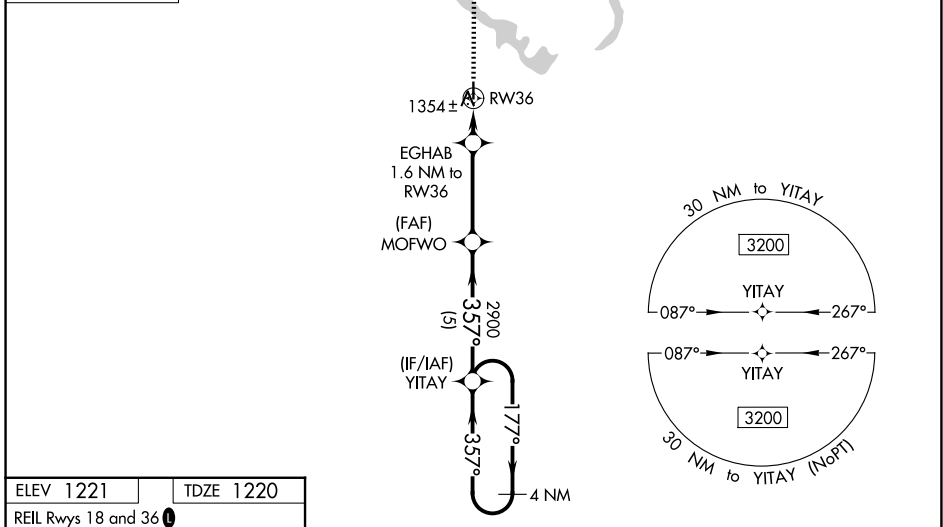
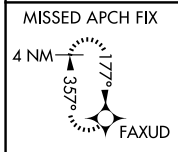
GUTHRIE COUNTY RGNL (GCT)

RNP APCH - GPS.

**NA** Baro-VNAV NA. Use Audubon altimeter setting; when not received, use Carroll altimeter setting and increase LPV DA to 1533, LNAV/VNAV DA to 1580, and all MDA 20 feet. Rwy 36 helicopter visibility reduction below 3/4 SM NA.

MISSED APPROACH: Climb to 3000 direct FAXUD and hold.

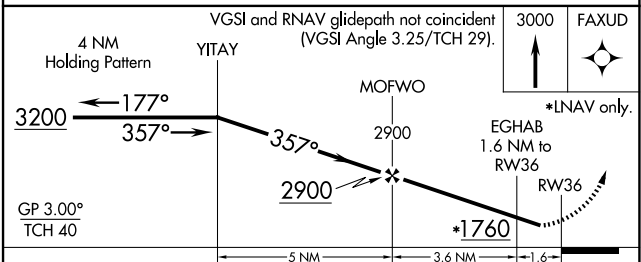
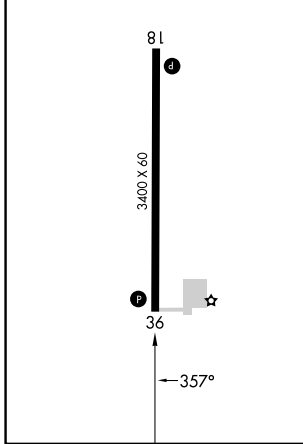
ADU AWOS-3 <b>118.075</b>	DES MOINES APP CON <b>123.9 360.7</b>	UNICOM <b>122.8 (CTAF) 0</b>
------------------------------	--	---------------------------------



ELEV 1221	TDZE 1220
-----------	-----------

REIL Rws 18 and 36 **1**

MIRL Rwy 18-36 **1**



CATEGORY	A	B	C	D
LPV DA	1530-1	310 (400-1)		NA
LNAV/VNAV DA	1577-1¼	357 (400-1¼)		NA
LNAV MDA	1680-1	460 (500-1)		NA
CIRCLING	1740-1 519 (600-1)	1880-1 659 (700-1)		NA

NC-3, 14 MAY 2026 to 11 JUN 2026

NC-3, 14 MAY 2026 to 11 JUN 2026