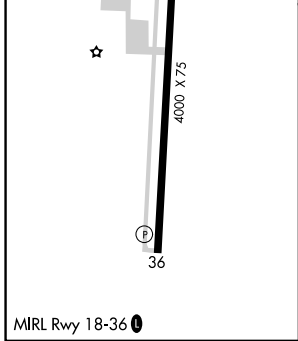
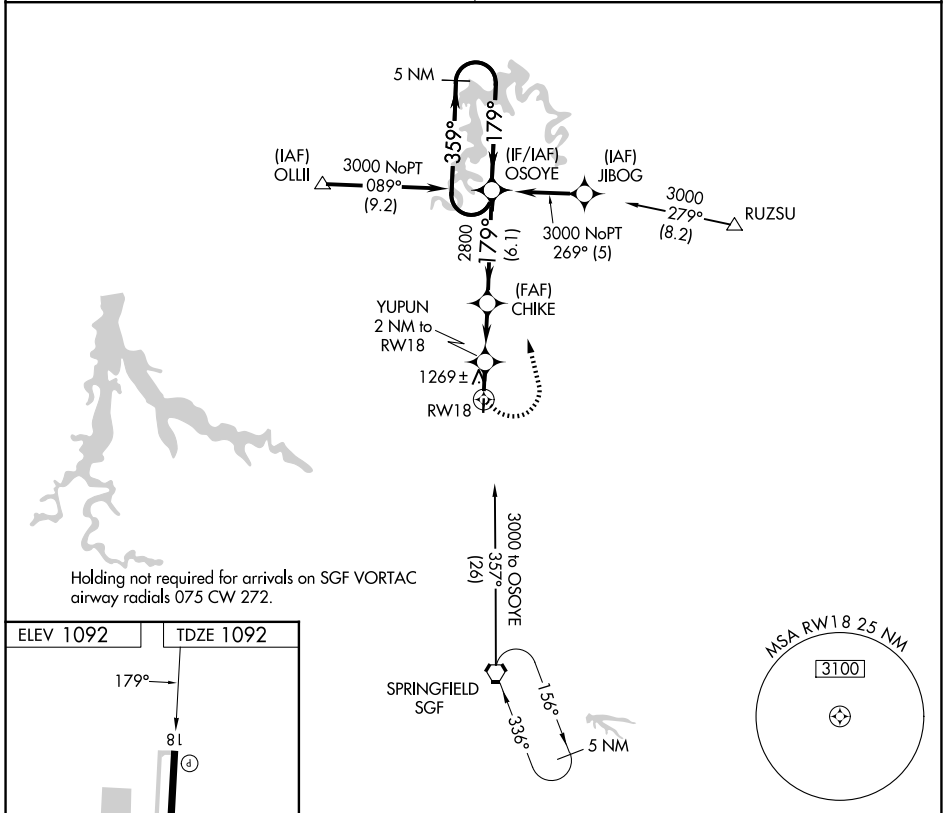


APP CRS	Rwy Ldg	<b>4000</b>
<b>179°</b>	TDZE	<b>1092</b>
	Apt Elev	<b>1092</b>

# RNAV (GPS) RWY 18

BOLIVAR MUNI (M17)

RNP APCH - GPS.		MISSED APPROACH: Climbing left turn to 3000 direct OSOYE and hold.
<p><b>▼</b> Rwy 18 helicopter visibility reduction below 1 SM NA.</p> <p><b>▲ NA</b> Use Springfield-Branson Ntl altimeter setting. Straight-in and Circling Rwy 18 NA at night.</p>	<p>SPRINGFIELD APP CON</p> <p><b>124.95 318.2</b></p>	
		<p>UNICOM</p> <p><b>123.0 (CTAF) 0</b></p>



3000	OSOYE	VGSI and descent angles not coincident (VGSI Angle 3.75/TCH 40).	5 NM Holding Pattern	
	YUPUN 2 NM to RW18	CHIKE	OSOYE	
	RW18	1760	2800	
	2 NM	3.2 NM	6.1 NM	
3.04°	TCH 38	179°	359°	
		179°	3000	
CATEGORY	A	B	C	D
LNAV MDA	1600-1	508 (600-1)	1600-1 3/8 508 (600-1 3/8)	NA
CIRCLING	1660-1	568 (600-1)	1740-1 3/4 648 (700-1 3/4)	NA

NC-3, 14 MAY 2026 to 11 JUN 2026

NC-3, 14 MAY 2026 to 11 JUN 2026