

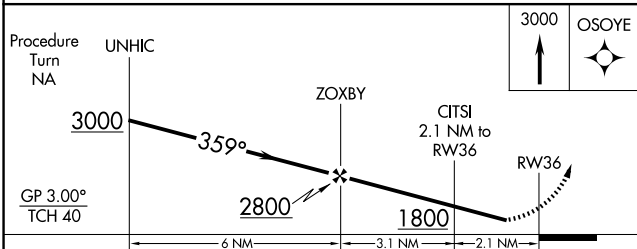
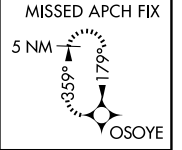
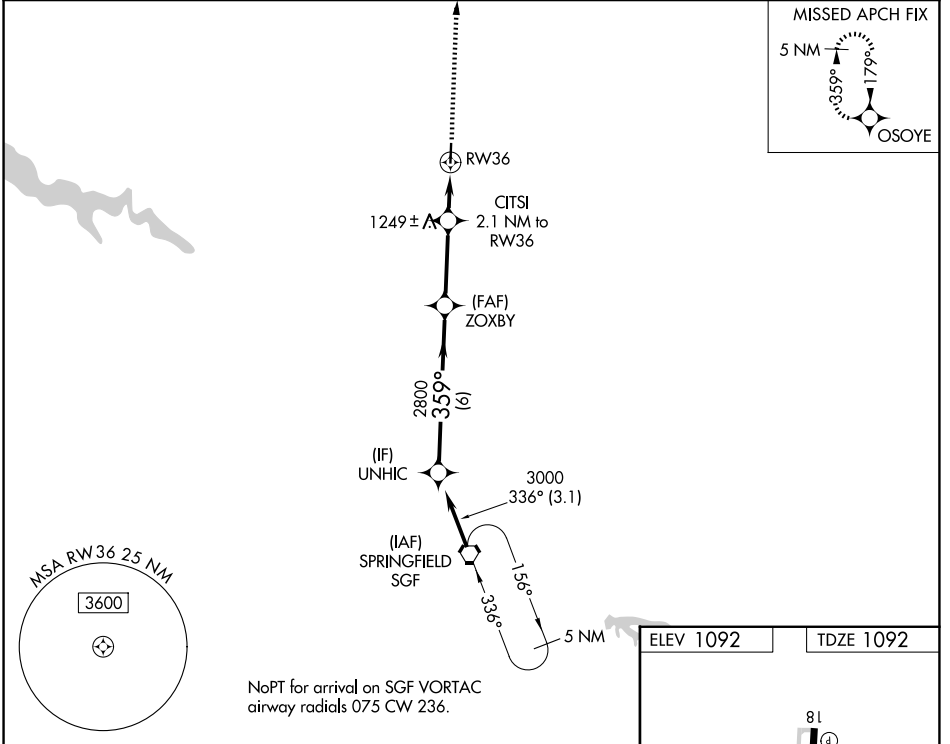
WAAS CH <b>78303</b> <b>W36A</b>	APP CRS <b>359°</b>	Rwy Ldg TDZE Apt Elev	<b>4000</b> <b>1092</b> <b>1092</b>
--	------------------------	-----------------------------	---

# RNAV (GPS) RWY 36

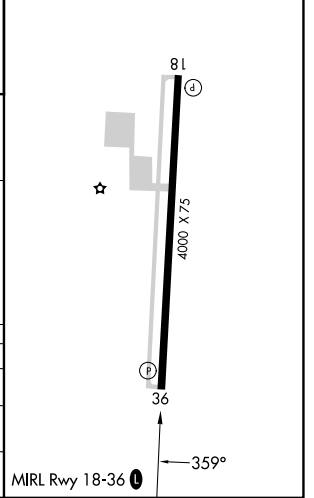
BOLIVAR MUNI (M17)

RNP APCH - GPS.	MISSED APPROACH: Climb to 3000 direct OSOYE and hold. Rwy 36 helicopter visibility reduction below 3/4 SM NA. Use Springfield-Branson Ntl altimeter setting. Circling Rwy 18 NA at night.
SPRINGFIELD APP CON <b>124.95 318.2</b>	

UNICOM <b>123.0 (CTAF) 0</b>
---------------------------------



ELEV 1092	TDZE 1092
-----------	-----------



CATEGORY	A	B	C	D
LPV DA	1448-1 1/8 356 (400-1 1/8)			NA
LNAV MDA	1580-1 488 (500-1)		1580-1 1/4 488 (500-1 1/4)	NA
CIRCLING	1660-1 568 (600-1)		1740-1 3/4 648 (700-1 3/4)	NA

NC-3, 14 MAY 2026 to 11 JUN 2026

NC-3, 14 MAY 2026 to 11 JUN 2026