

VORTAC SGF 116.9 Chan 116	APP CRS 353°	Rwy Ldg TDZE 1092 Apt Elev 1092
---	------------------------	---

VOR/DME RWY 36

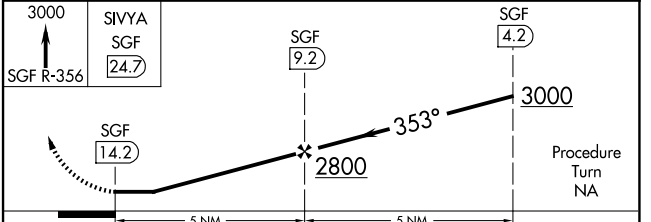
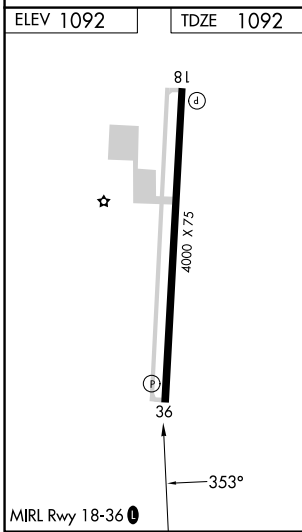
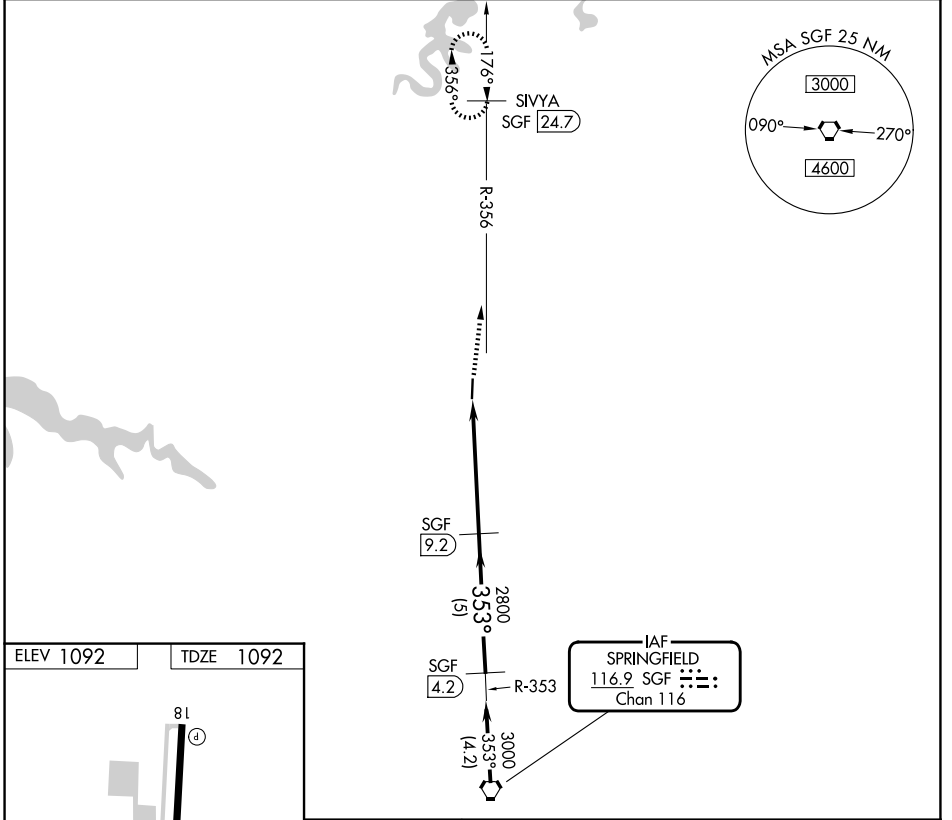
BOLIVAR MUNI (M17)

NA Use Springfield-Branson Ntl Altimeter setting. Circling Rwy 18 NA at night.

MISSED APPROACH: Climb to 3000 via SGF R-356 to SIVYA/SGF 24.7 DME and hold.

SPRINGFIELD APP CON **124.95 318.2**

UNICOM **123.0** (CTAF) **0**



CATEGORY	A	B	C	D
S-36	1700-1	608 (700-1)		NA
CIRCLING	1700-1	608 (700-1)		NA

NC-3, 14 MAY 2026 to 11 JUN 2026

NC-3, 14 MAY 2026 to 11 JUN 2026