

APP CRS 061°	Rwy Ldg TDZE Apt Elev	5100 3426 3426
------------------------	-----------------------------	-------------------------------------------

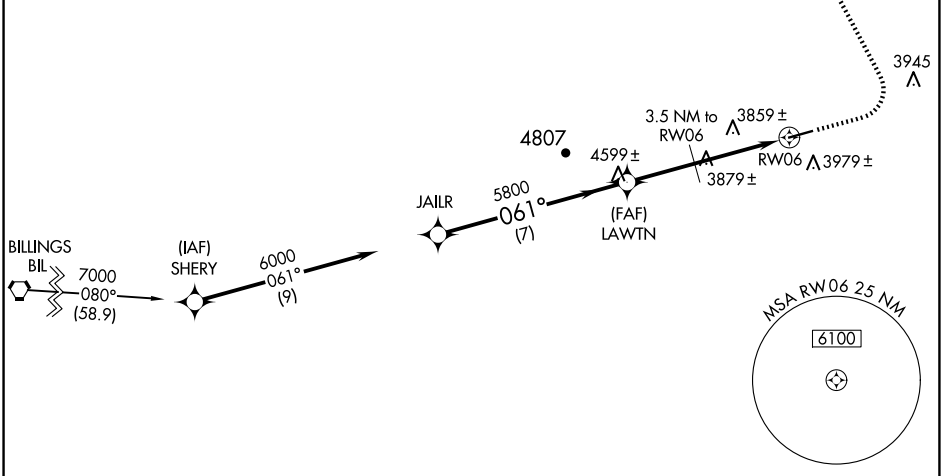
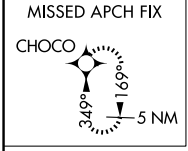
GPS RWY 6

COLSTRIP (M46)

NA When local altimeter not received use Miles City altimeter setting.
-34°C Helicopter visibility reduction below 3/4 SM NA.

MISSED APPROACH: Climb to 4500 then climbing left turn to 6000 direct CHOCO WP and hold.

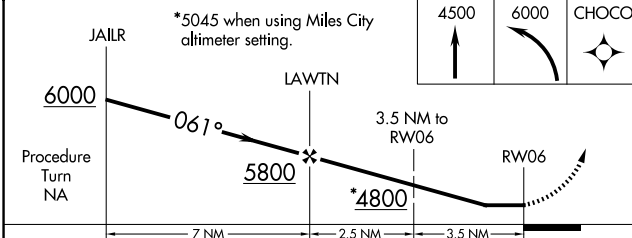
AWOS-3PT 118.525	SALT LAKE CENTER 126.85 305.2	UNICOM 122.7 (CTAF) 0
-----------------------------------	------------------------------------------------	----------------------------------------



NW-1, 14 MAY 2026 to 11 JUN 2026

NW-1, 14 MAY 2026 to 11 JUN 2026

ELEV 3426	TDZE 3426
-----------	-----------



CATEGORY	A	B	C	D
S-6	4220-1 794 (800-1)	4220-1 1/4 794 (800-1 1/4)	4220-2 1/4 794 (800-2 1/4)	NA
CIRCLING	4340-1 1/4	914 (1000-1 1/4)	4340-2 3/4 914 (1000-2 3/4)	NA
MILES CITY ALTIMETER SETTING				
S-6	NA			
CIRCLING	4580-1 1/4 1154 (1200-1 1/4)	4580-1 1/2 1154 (1200-1 1/2)	4580-3 1154 (1200-3)	NA

