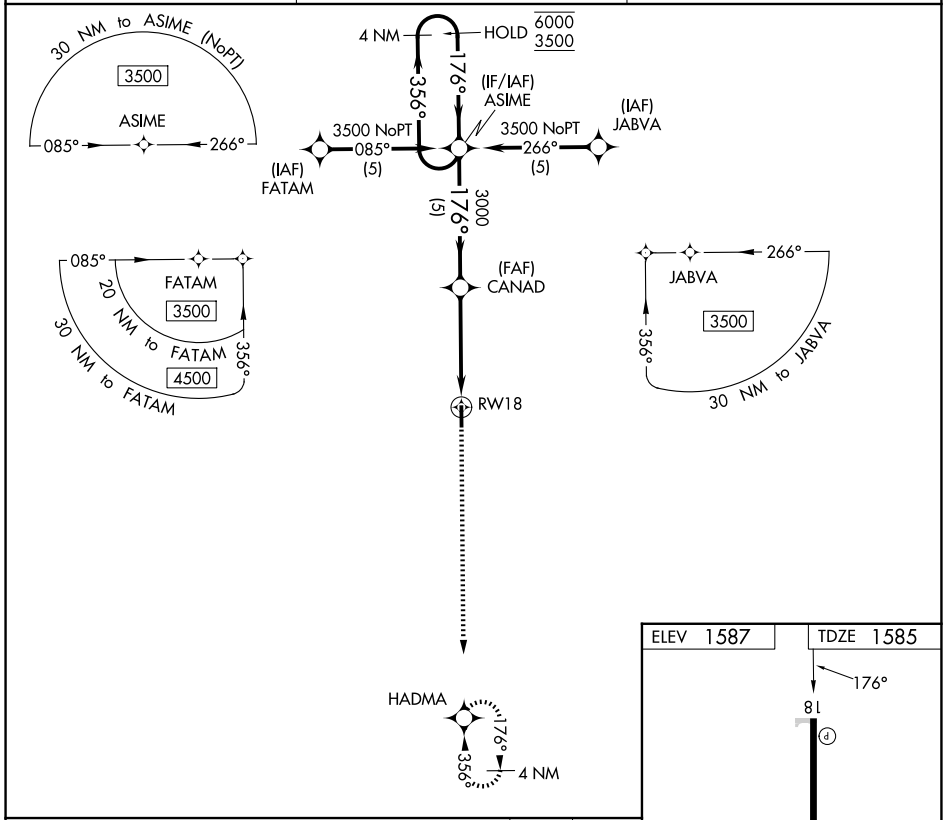


APP CRS <b>176°</b>	Rwy Ldg TDZE Apt Elev	<b>4001</b> <b>1585</b> <b>1587</b>
------------------------	-----------------------------	---

# RNAV (GPS) RWY 18

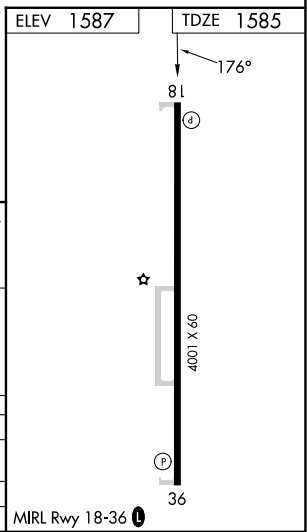
HINTON MUNI (208)

RNP APCH-GPS.		MISSED APPROACH: Climb to 3600 direct HADMA and hold.
Baro-VNAV NA. Use Weatherford altimeter setting.		
OJA AWOS-3PT <b>118.575</b>	FORT WORTH CENTER <b>128.4 269.37</b>	UNICOM <b>123.05 (CTAF)</b>



SC-1, 14 MAY 2026 to 11 JUN 2026

SC-1, 14 MAY 2026 to 11 JUN 2026



4 NM Holding Pattern	ASIME	3600 HADMA
6000 ← 356°	→ 176°	
3500	→ 176°	
GP 3.03°	CANAD	RWY 18
TCH 42	3000	
	5 NM	4.3 NM

CATEGORY	A	B	C	D
LNAV/VNAV DA	2001-1 1/8	416 (500-1 1/8)		NA
LNAV MDA	2060-1	475 (500-1)		NA
CIRCLING	2200-1	613 (700-1)		NA

MIRL Rwy 18-36