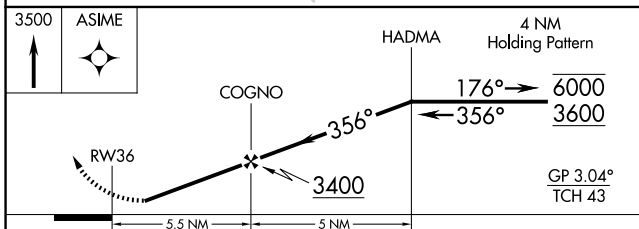
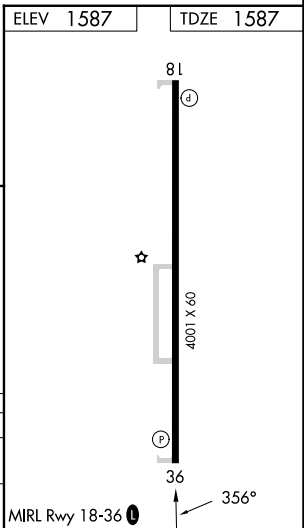
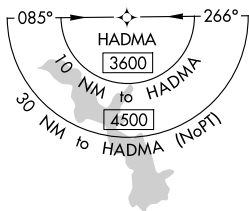
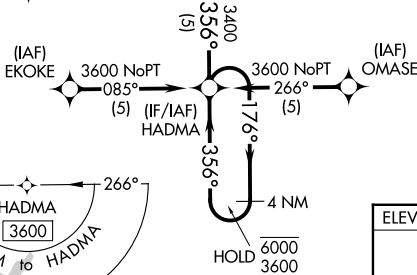
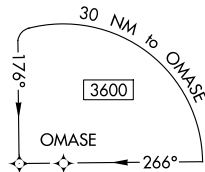
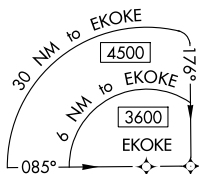
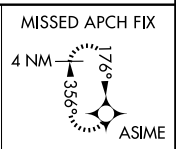


| | | |
|-------------|----------|-------------|
| APP CRS | Rwy Ldg | 4001 |
| 356° | TDZE | 1587 |
| | Apt Elev | 1587 |

RNAV (GPS) RWY 36

HINTON MUNI (208)

| | | |
|---|--|---|
| RNP APCH-GPS. | | MISSED APPROACH: Climb to 3500 direct ASIME and hold. |
| <p>▽ Rwy 36 helicopter visibility reduction below 3/4 SM NA. ▲ NA Baro-VNAV NA. Use Weatherford altimeter setting.</p> | | |
| OJA AWOS-3PT 118.575 | FORT WORTH CENTER 128.4 269.37 | UNICOM 123.05 (CTAF) 0 |



| CATEGORY | A | B | C | D |
|------------|---------------|-----------------|----|---|
| LNNAV/VNAV | DA 2211-1 3/4 | 624 (700-1 3/4) | NA | |
| LNNAV MDA | 2220-1 | 633 (700-1) | NA | |

SC-1, 14 MAY 2026 to 11 JUN 2026

SC-1, 14 MAY 2026 to 11 JUN 2026