

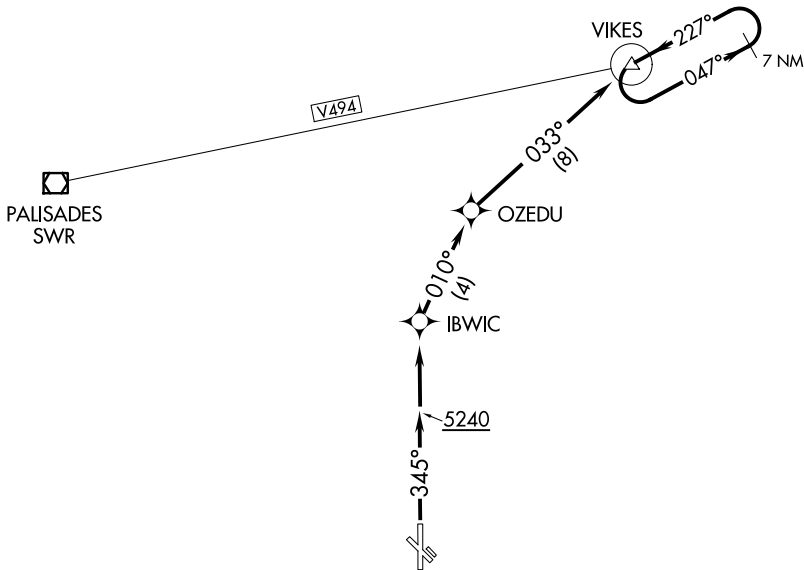
(MINDN3.VIKES) 26134

MINDEN THREE DEPARTURE (OBSTACLE) (RNAV)

MINDEN-TAHOE (MEV)
AL-9430 (FAA) MINDEN, NEVADA

NORCAL DEP CON
119.2 279.55
RENO TOWER
118.7 257.8

RNAV 1 - GPS



TAKEOFF MINIMUMS

Rwys 12, 16, 30: NA - obstacles.

Rwys 12L, 30R: NA - environmental.

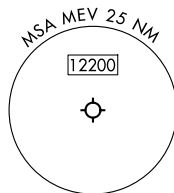
Rwy 34: Standard with a minimum climb of 413'/NM to 7800.

TAKEOFF OBSTACLE NOTES

Rwy 34: Vegetation beginning 13' from DER, 317' right of centerline, up to 4711' MSL.

Fence 236' from DER, 302' right of centerline, 6' AGL/4714' MSL.

NOTE: Chart not to scale.



DEPARTURE ROUTE DESCRIPTION

TAKEOFF RUNWAY 34: Climb heading 345° to 5240 then direct IBWIC, then on track 010° to OZEDU, then on track 033° to VIKES, then climb in VIKES holding pattern (hold NE, left turn, 227° inbound) to cross VIKES at or above MEA/MCA for assigned route of flight.

MINDEN THREE DEPARTURE (OBSTACLE) (RNAV)
(MINDN3.VIKES) 14MAY26

MINDEN, NEVADA
MINDEN-TAHOE (MEV)

SW-4, 14 MAY 2026 to 11 JUN 2026

SW-4, 14 MAY 2026 to 11 JUN 2026