

RNAV (GPS) RWY 16

MINDEN-TAHOE (MEV)

| | | |
|-------------|----------|-------------|
| APP CRS | Rwy Ldg | 7399 |
| 165° | TDZE | 4708 |
| | Apt Elev | 4724 |

RNP APCH - GPS.

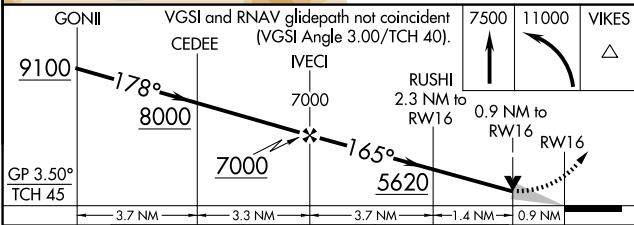
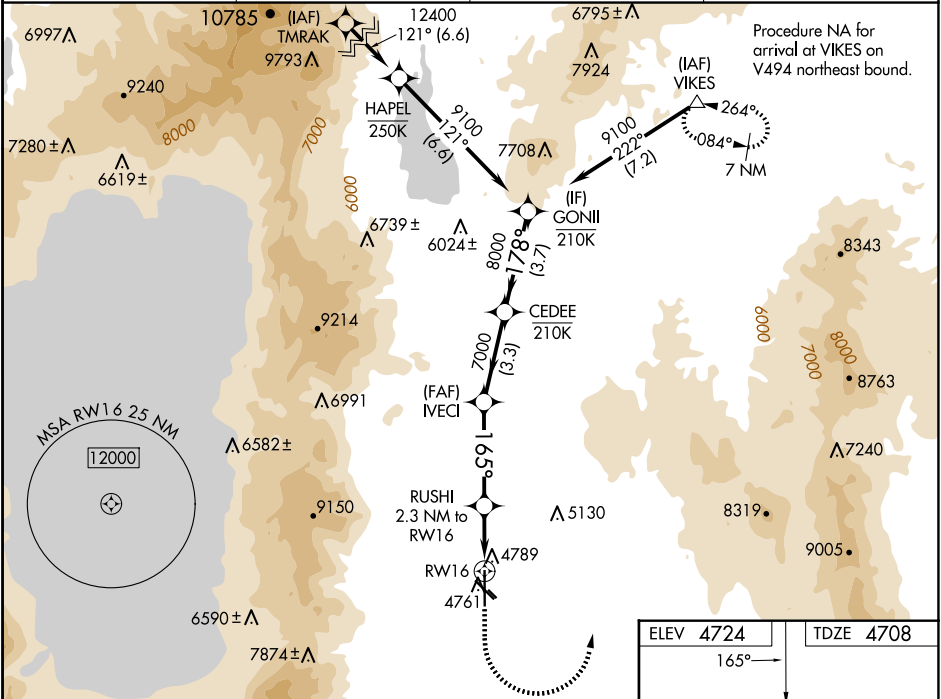
Baro-VNAV NA. Circling NA for Cat D southwest of Rwy 12 and west of Rwy 34. Circling NA to Rwy 12G and 30G.

MISSED APPROACH: (Do not exceed 210K until VIKES) Climb to 7500, then climbing left turn to 11000 direct VIKES and hold, continue climb-in-hold to 11000.

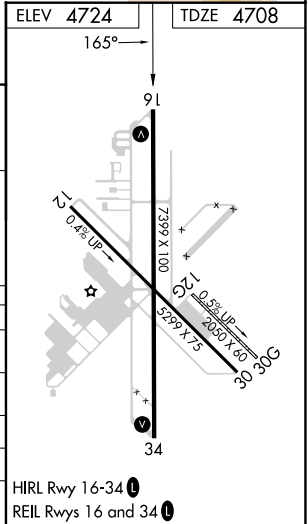
*Missed approach requires minimum climb of 245 feet per NM to 9200.

#Missed approach requires minimum climb of 310 feet per NM to 9400.

| | | | |
|----------------------------|---------------------------------------|---------------------------|--------------------------------|
| AWOS-3PT 119.325 | NORCAL APP CON 119.2 279.55 | CLNC DEL 133.25 | UNICOM 123.05 (CTAF) |
|----------------------------|---------------------------------------|---------------------------|--------------------------------|



| CATEGORY | A | B | C | D |
|-----------|------|---------|---------------|---|
| LNAV/VNAV | DA* | 5106-1½ | 398 (400-1½) | |
| LNAV/VNAV | DA | 6174-5 | 1466 (1500-5) | |
| LNAV | MDA# | 5040-1 | 332 (400-1) | |
| LNAV | MDA | 5600-1¼ | 892 (900-1¼) | 6020-3 1312 (1300-3) |
| CIRCLING | | 5600-1¼ | 876 (900-1¼) | 6020-3 1296 (1300-3) 6440-3 1716 (1800-3) |



SW-4, 14 MAY 2026 to 11 JUN 2026

SW-4, 14 MAY 2026 to 11 JUN 2026