

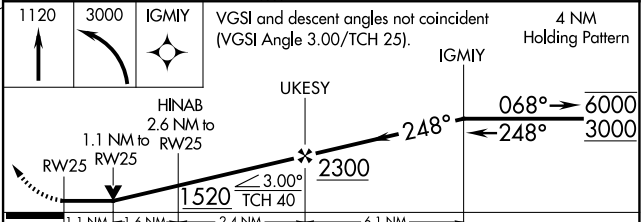
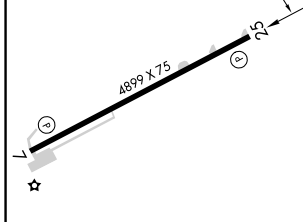
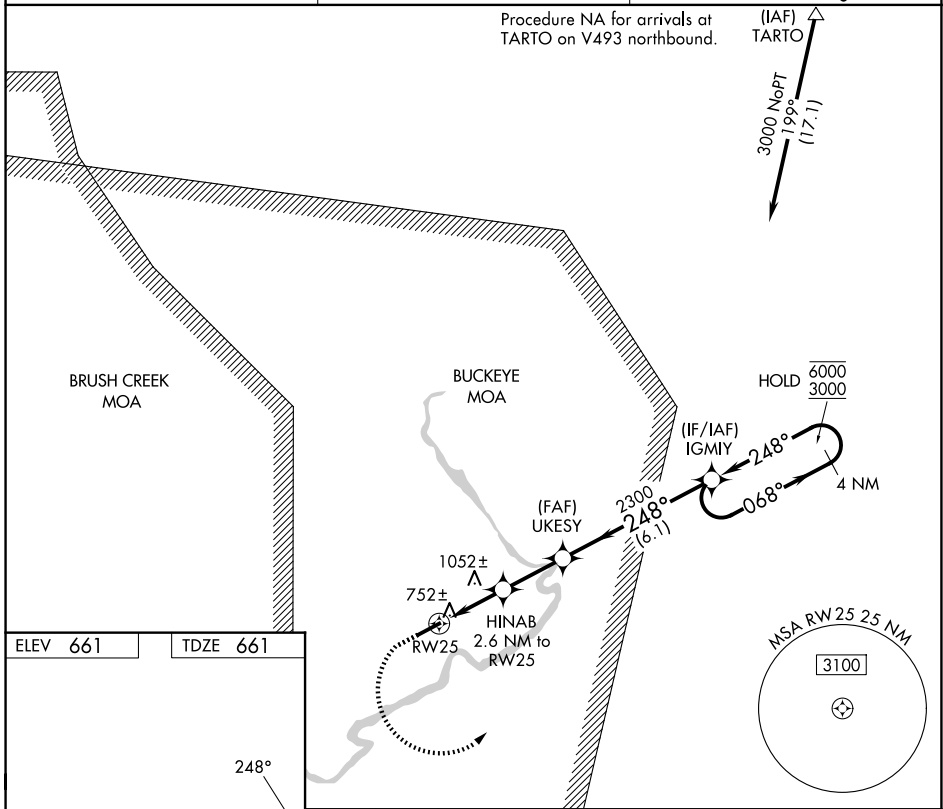
WAAS CH <b>97537</b> <b>W25A</b>	APP CRS <b>248°</b>	Rwy Ldg TDZE <b>661</b> Apt Elev <b>661</b>	<b>4899</b> <b>661</b> <b>661</b>
----------------------------------------	------------------------	---------------------------------------------------	-----------------------------------------

# RNAV (GPS) RWY 25

PIKE COUNTY (EOP)

RNP APCH - GPS	MISSED APPROACH: Climb to 1120 then climbing left turn to 3000 direct IGMY and hold.
<p><b>NA</b> Rwy 25 helicopter visibility reduction below 3/4 SM NA. Circling Rwy 7 NA at night. When local altimeter setting not received, use PMH altimeter setting and increase all MDAs 60 feet and LNAV visibility Cat C/D 1/2 SM, and LP visibility Cat C/D 1/2 SM, and Circling visibility Cat A/B/C 1/2 SM. VDP NA when using PMH altimeter setting.</p>	

AWOS-3PT <b>121.45</b>	INDIANAPOLIS CENTER <b>135.575 290.5</b>	UNICOM <b>123.0 (CTAF)</b>
---------------------------	---------------------------------------------	-------------------------------



REIL Rwy 7 and 25	MIRL Rwy 7-25				
CATEGORY	A	B	C	D	
LP MDA	1020-1				359 (400-1)
LNAV MDA	1280-1	619 (700-1)	1280-1 3/4	619 (700-1 3/4)	
CIRCLING	1440-1 779 (800-1)	1460-1 799 (800-1)	1500-2 1/2 839 (900-2 1/2)	1640-3 979 (1000-3)	

EC-2, 14 MAY 2026 to 11 JUN 2026

EC-2, 14 MAY 2026 to 11 JUN 2026