

WAAS CH 56437 W07A	APP CRS 068°	Rwy Ldg 4899 TDZE 661 Apt Elev 661
--	------------------------	---

RNAV (GPS) RWY 7

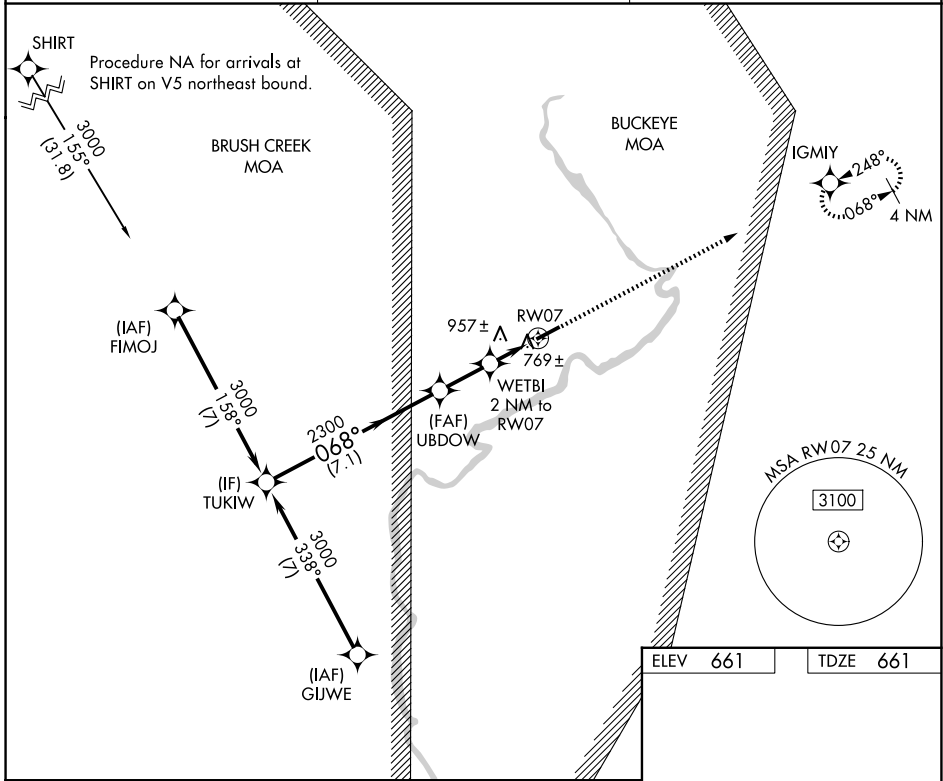
PIKE COUNTY (EOP)

RNP APCH - GPS

▼ Rwy 7 helicopter visibility reduction below 1 SM NA. Straight-in Rwy 7 NA at night. Circling Rwy 7 NA at night. When local altimeter setting not received, use PMH altimeter setting and increase all MDAs 60 feet and LNAV visibility Cat C 1/8 SM, and LP visibility Cat C 1/8 SM, and Circling all visibilities 1/4 SM.

▲ NA MISSED APPROACH: Climb to 3000 direct IGMYY and hold.

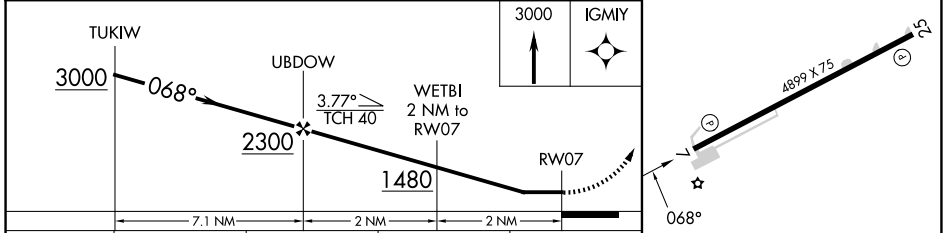
AWOS-3PT 121.45	INDIANAPOLIS CENTER 135,575 290.5	UNICOM 123.0 (CTAF) 0
---------------------------	---	---------------------------------



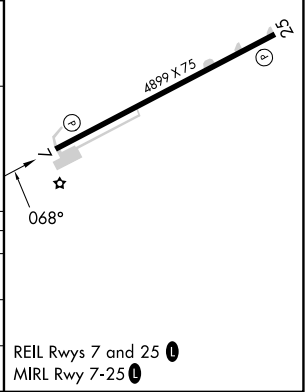
EC-2, 14 MAY 2026 to 11 JUN 2026

EC-2, 14 MAY 2026 to 11 JUN 2026

ELEV 661	TDZE 661
-----------------	-----------------



CATEGORY	A	B	C	D
LP MDA	1020-1		359 (400-1)	
LNAV MDA	1220-1	559 (600-1)	1220-1 1/8 559 (600-1 1/8)	NA
CIRCLING	1440-1 779 (800-1)	1460-1 799 (800-1)	1500-2 1/2 839 (900-2 1/2)	NA



REIL Rwy 7 and 25 **0**
MIRL Rwy 7-25 **0**