

RNAV (GPS) RWY 19

RICHFIELD MUNI (RIF')

WAAS CH 70537 W19A	APP CRS 207°	Rwy Ldg TDZE Apt Elev	7100 5286 5318
--	------------------------	-----------------------------	---

RNP APCH-GPS.

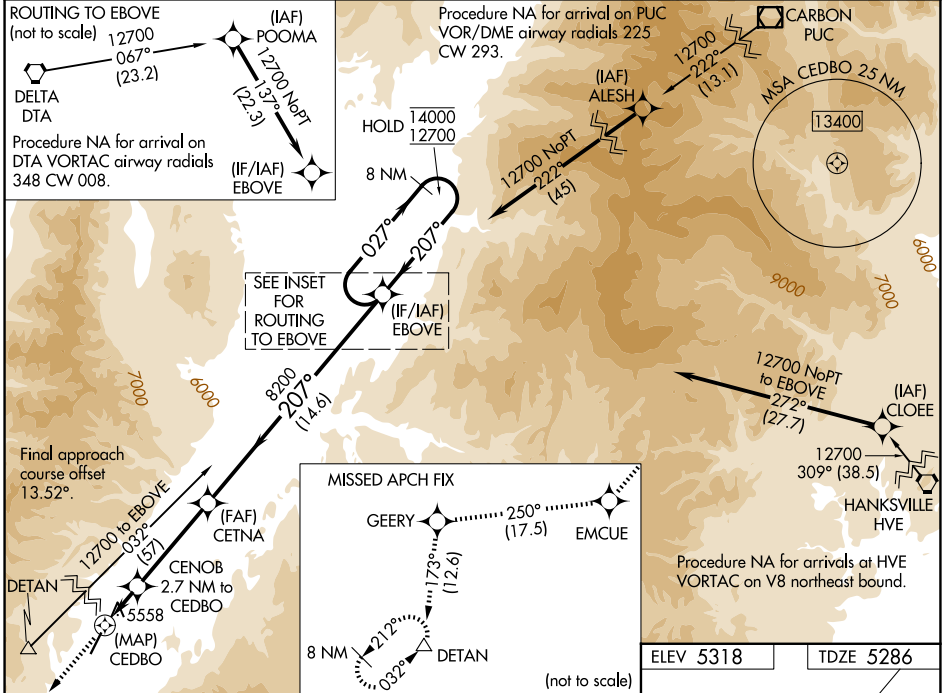
⚠ Rwy 19 helicopter visibility reduction below 3/4 SM NA. When local altimeter setting not received, procedure NA.

⚠ MISSED APPROACH: Climb to 12000 direct EMCUE, and track 250° to GEERY, and track 173° to DETAN and hold.

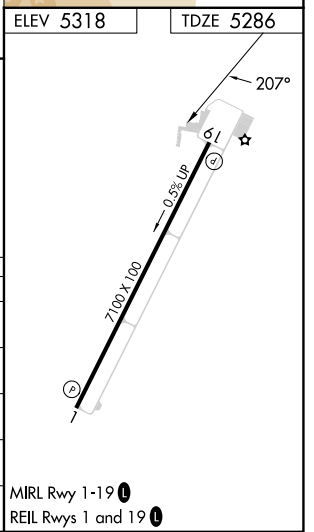
* Missed approach requires minimum climb of 380 feet per NM to 9600.

Missed approach requires minimum climb of 390 feet per NM to 9600.

AWOS-3 133.375	SALT LAKE CITY CENTER 125.575 379.275	UNICOM 122.8 (CTAF) 0
--------------------------	---	---------------------------------



12000 EMCUE	tr 250°	GEERY	tr 173°	DETAN	Visual Segment - Obstacles.
↑	⬠	⬠	⬠	△	EBOVE 8 NM Holding Pattern
CENOB 1.3 NM 2.7 NM to CEDBO CEDBO CETNA					027° → 14000 ← 207° 12700
CEDBO 6340 8200					8 NM Holding Pattern
0.5 1.3 NM 1.4 NM 5.8 NM 14.6 NM					



CATEGORY	A	B	C	D
LP MDA*	5880-1	594 (600-1)	5880-1 3/4 594 (600-1 3/4)	NA
LP MDA	7340-1 1/4 2054 (2100-1 1/4)	7340-1 1/2 2054 (2100-1 1/2)	7340-3 2054 (2100-3)	NA
LNAV MDA#	6340-1 1/4 1054 (1100-1 1/4)	6340-1 1/2 1054 (1100-1 1/2)	6340-3 1054 (1100-3)	NA
LNAV MDA	7440-1 1/4 2154 (2200-1 1/4)	7440-1 1/2 2154 (2200-1 1/2)	7440-3 2154 (2200-3)	NA
CIRCLING	7440-1 1/4 2122 (2200-1 1/4)	7440-1 1/2 2122 (2200-1 1/2)	7440-3 2122 (2200-3)	NA

SW-4, 14 MAY 2026 to 11 JUN 2026

SW-4, 14 MAY 2026 to 11 JUN 2026