

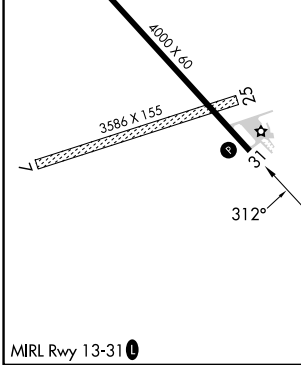
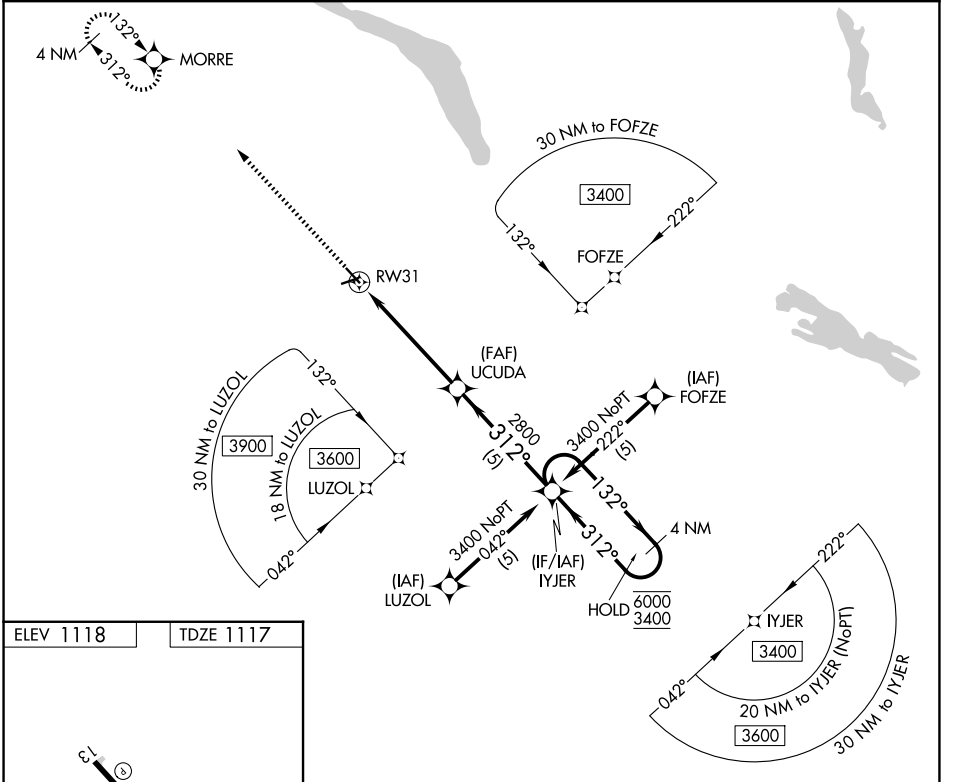
APP CRS	Rwy Ldg	4000
312°	TDZE	1117
	Apt Elev	1118

RNAV (GPS) RWY 31

MILBANK MUNI (1D1)

RNP APCH - GPS.	<p>▽ Rwy 31 helicopter visibility reduction below 3/4 SM NA. Circling Rwy 7, 25 NA. When local altimeter setting not received, use Ortonville altimeter setting and increase all MDAs 20 feet. VDP NA when using Ortonville Muni/Martinson Fld altimeter setting.</p>	<p>MISSED APPROACH: Climb to 3400 direct MORRE and hold.</p>

AWOS-3P 118.9	MINNEAPOLIS CENTER 128.5 306.2	AUNICOM 122.8 (CTAF) 0
-------------------------	--	----------------------------------



ELEV 1118	TDZE 1117
3400 MORRE	Visual Segment - Obstacles.
UCUDA	IYJER 4 NM Holding Pattern
1.8 NM to RW31	132° → 6000
1.8 NM	← 312° 3400
3.4 NM	
5 NM	
CATEGORY	A B C D
LNAV MDA	1720-1 603 (700-1) NA NA
CIRCLING	1720-1 602 (700-1) NA NA

NC-1, 14 MAY 2026 to 11 JUN 2026

NC-1, 14 MAY 2026 to 11 JUN 2026