

APP CRS 047°	Rwy Idg 6027
	TDZE 2454
	Apt Elev 2454

RNAV (GPS) RWY 6

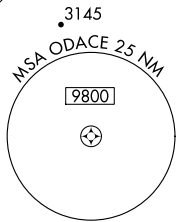
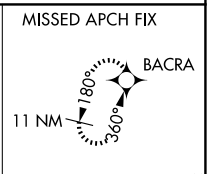
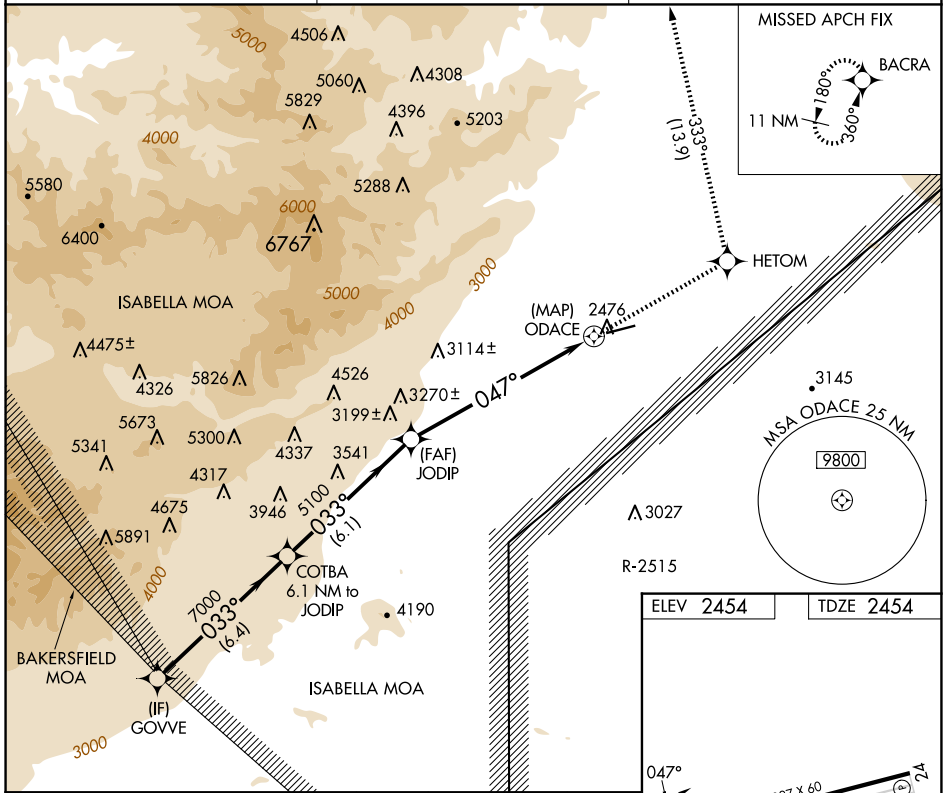
CALIFORNIA CITY MUNI (L71)

RNP APCH.
RADAR required.

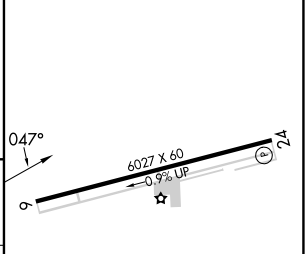
▽ If local altimeter setting not received, use Edwards AFB altimeter setting and increase all MDAs 60 feet; if neither received, procedure not authorized.

MISSED APPROACH: Climb to 9000 direct HETOM and via 333° track to BACRA and hold, continue climb-in-hold to 9000.

AWOS-1 120.875	JOSHUA APP CON 133.65 348.7	UNICOM 122.7 (CTAF)
--------------------------	---------------------------------------	-------------------------------



ELEV 2454	TDZE 2454
-----------	-----------



Procedure Turn NA	9000	7000	5100	ODACE
	033°	033°	047°	
	6.4 NM	6.1 NM	7.5 NM	0.5
CATEGORY	A	B	C	D
LNAV MDA	3660-1¼ 1206 (1300-1¼)	3660-1½ 1206 (1300-1½)	3660-3 1206 (1300-3)	NA

MIRL Rwy 6-24	REIL Rwy 24
---------------	-------------

SW-3, 14 MAY 2026 to 11 JUN 2026

SW-3, 14 MAY 2026 to 11 JUN 2026