

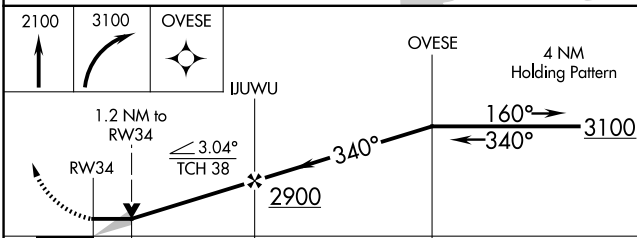
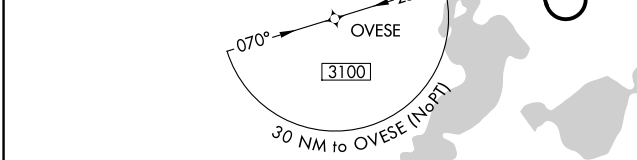
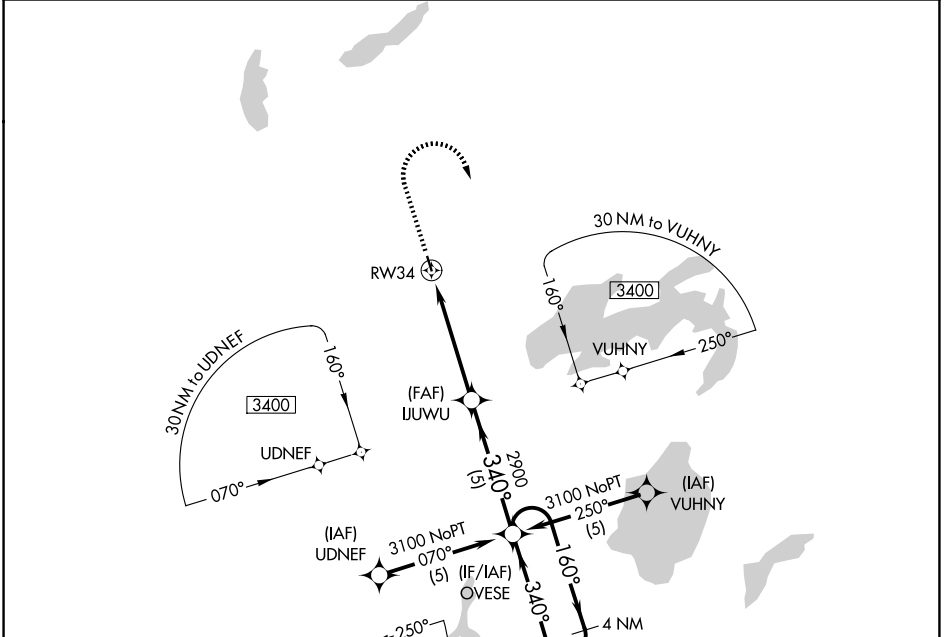
APP CRS	Rwy Ldg	3000
340°	TDZE	1295
	Apt Elev	1295

RNAV (GPS) RWY 34

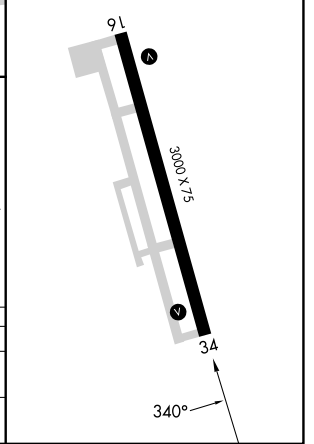
PINE RIVER RGNL (PWC)

NA GPS or RNP-0.3 required. DME/DME RNP-0.3 NA. MISSED APPROACH: Climb to 2100 then climbing right turn to 3100 direct OVESE WP and hold.

AWOS-3PT 118.525	MINNEAPOLIS CENTER 118.05 239.0	CTAF 122.9 0
----------------------------	---	-------------------------------



ELEV 1295	TDZE 1295
MIRL Rwy 16-34 0	
REIL Rwy 16 and 34 0	



CATEGORY	A	B	C	D
LNVA MDA	1700-1	405 (500-1)	1700-1¼ 405 (500-1¼)	NA
CIRCLING	1760-1 465 (500-1)	1840-1 545 (600-1)	1840-1½ 545 (600-1½)	NA

NC-1, 14 MAY 2026 to 11 JUN 2026

NC-1, 14 MAY 2026 to 11 JUN 2026