

PIKEVILLE, KENTUCKY

AL-9449 (FAA)

25219

LOC/DME I-PBX 109.7 Chan 34	APP CRS 274°	Rwy Ldg TDZE 1463 Apt Elev 1465
---	------------------------	---

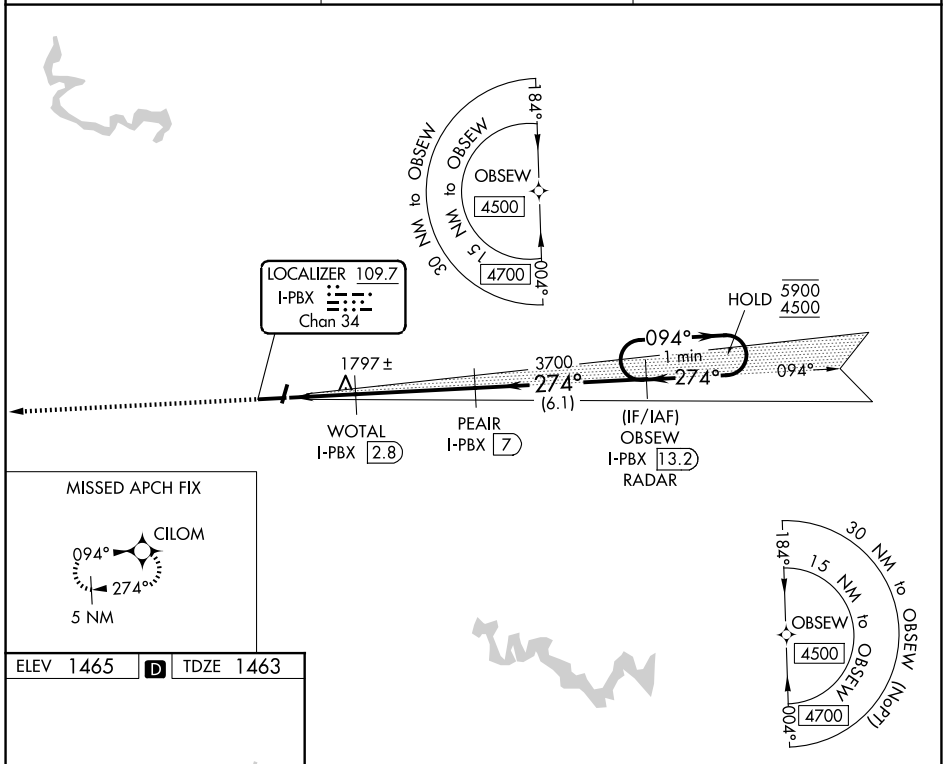
ILS or LOC RWY 27
PIKE COUNTY/HATCHER FLD (P.B.X)

RNP APCH - GPS.
 ▼ Circling NA to Rwys 2 and 20.
 ▲ Rwy 27 helicopter visibility reduction below 3/4 SM NA.
 MISSED APPROACH: Climb to 4500 direct CILOM and hold, continue climb-in-hold to 4500.

AWOS-3PT
121.225

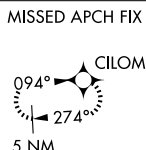
INDIANAPOLIS CENTER
126.575 257.85

UNICOM
122.8 (CTAF) 0

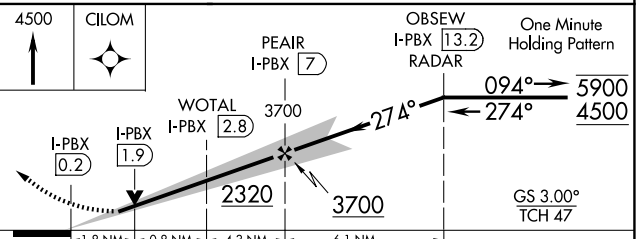
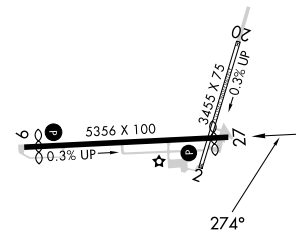


SE-1, 14 MAY 2026 to 11 JUN 2026

SE-1, 14 MAY 2026 to 11 JUN 2026



ELEV **1465** **D** TDZE **1463**



CATEGORY	A	B	C	D
S-ILS 27	1722-1		259 (300-1)	
S-LOC 27	2080-1	617 (700-1)	2080-1 3/4	617 (700-1 3/4)
CIRCLING	2120-1 655 (700-1)	2180-1 715 (800-1)	2180-2 715 (800-2)	2460-3 995 (1000-3)

PIKEVILLE, KENTUCKY
Amdt 2A 07AUG25

PIKE COUNTY/HATCHER FLD (P.B.X)
ILS or LOC RWY 27

37°34'N-82°34'W